

SIMPLE WESTERN VALIDATED ANTIBODY DATASHEET

[View
Antibody Link](#)

1

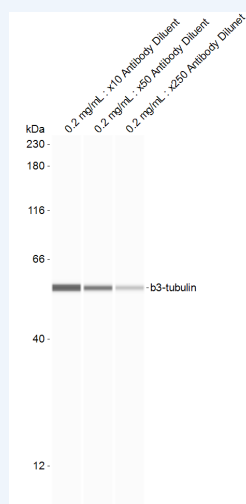


Figure 1: Simple Western Lane view shows β3-tubulin antibody at 1:10, 1:50, 1:250 dilution in Neuron (RA induced in vitro neural differentiation of NE-4C) at 0.2 mg/mL using 12 - 230 kDa separation system . Customer submitted data.

2A

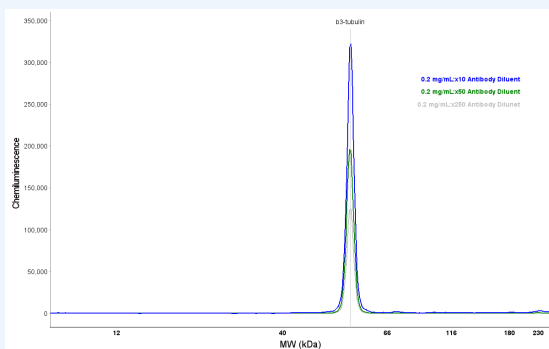


Figure 2A: Simple Western Electropherogram of β3-tubulin antibody was used at 1:10, 1:50, 1:250 dilution in Neuron (RA induced in vitro neural differentiation of NE-4C) at 0.2 mg/mL. Customer submitted data.

2B

ANTIBODY CONCENTRATION	PEAK AREAS	BASELINE VALUES
1. 1:10	2201821.70	1418.80
2. 1:50	1373086.90	371.80
3. 1:250	850811.60	143.10

Figure 2B: Table range of antibody concentrations tested and peak areas and baseline values. Customer submitted data.

PROTEIN TARGET/ANTIBODY	
Protein Target	β 3-tubulin
Protein Isoform	
Antibody Type	Primary
Host Species/Clonality	Mouse Monoclonal
ASSAY	
Sample Type	Neuron (RA induced in vitro neural differentiation of NE-4C)
Sample Concentration	0.08 mg/ mL, 0.4 mg/ mL, 2.0 mg/ mL,
Antibody Concentration	$\times 10$, $\times 50$, $\times 250$
Antibody Diluent	
Detection Mode	Chemiluminescent
Separation Type	Size
Matrix	12 - 230 kDa
Observed kDa	57

PUBLICATIONS

This antibody is validated for Gel-Free, Blot Free, Hands Free Simple Western Systems. To learn about Simple Western Systems, available Simple Western antibodies, or new antibody submissions visit the links below. For additional information, please contact support@proteinsimple.com.

[Simple Western Systems](#)

[Simple Western Antibody Database](#)

[Simple Western Antibody Submission](#)

PAGE 2/2