

SIMPLE WESTERN CERTIFIED ANTIBODY DATASHEET

[View Antibody Link](#)

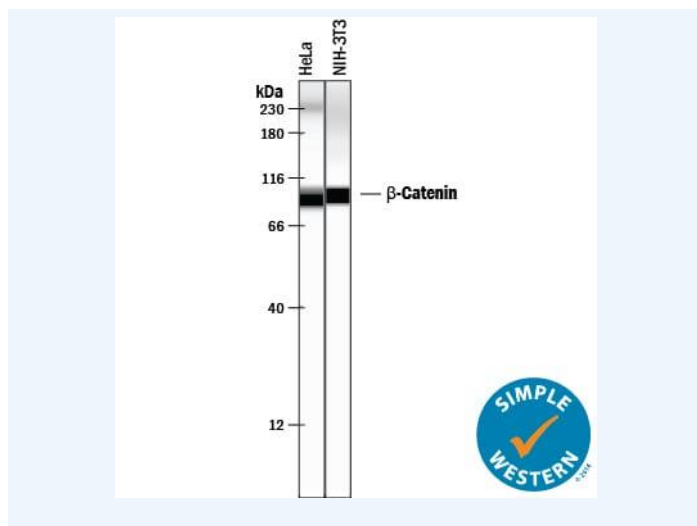


Figure1 Simple Western lane view shows lysates of HeLa human cervical epithelial carcinoma cell line and NIH-3T3 mouse embryonic fibroblast cell line, loaded at 0.2 mg/mL. A specific band was detected for β -Catenin at approximately 94-97 kDa (as indicated) using 50 μ g/mL of Goat Anti-Human/Mouse/Rat β -Catenin Antigen Affinity-purified Polyclonal Antibody (Catalog # AF1329) followed by 1:50 dilution of HRP-conjugated Anti-Goat IgG Secondary Antibody (Catalog # HAF109). This experiment was conducted under reducing conditions and using the 12-230 kDa separation system. Non-specific interaction with the 230 kDa Simple Western standard may be seen with this antibody.

PROTEIN TARGET/ANTIBODY	
Protein Target	beta-Catenin
Protein Isoform	beta-Catenin
Antibody Type	Primary
Host Species/Clonality	Goat Polyclonal
ASSAY	
Sample Type	HeLa human cervical epithelial carcinoma cell line and NIH-3T3 mouse embryonic fibroblast cell line
Sample Concentration	0.2 mg/mL
Antibody Concentration/Dilution	50 μ g/mL
Antibody Diluent	
Detection Mode	Chemiluminescence
Separation Type	Size
Matrix	12-230 kDa
Observed kDa	94-97 kDa
Publications	None listed

This antibody is certified for Gel-Free, Blot Free, Hands Free Simple Western Systems. To learn about Simple Western Systems, available Simple Western antibodies, or new antibody submissions visit the links below. For additional information, please contact support@proteinsimple.com.

[Simple Western Systems](#)

[Simple Western Antibody Database](#)

[Simple Western Antibody Submission](#)