

SIMPLE WESTERN CERTIFIED ANTIBODY DATASHEET

[View Antibody Link](#)

1

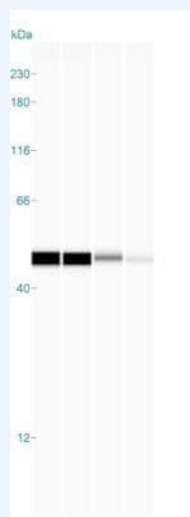


Figure 1: beta-Actin Antibody (AC-15) - Purified [NB110-67828] - Analysis using the HRP conjugate of NB600-501. Image shows a specific band for Beta-Actin in 0.2 mg/mL of HeLa, MCF-7, SH-SY5Y,

2

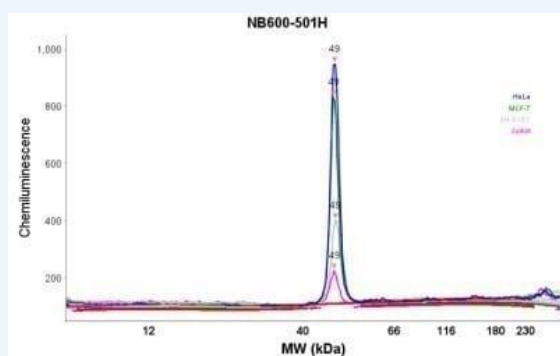


Figure 2: beta-Actin Antibody (AC-15) - Purified [NB110-67828] - Analysis using the HRP conjugate of NB600-501. Electropherogram image(s) of corresponding Simple Western lane view. Beta-Actin antibody was used at 1:500 dilution on HeLa, MCF-7, SH-SY5Y,

PROTEIN TARGET/ANTIBODY	
Protein Target	beta-Actin
Protein Isoform	beta-Actin Antibody (AC-15) - Purified
Antibody Type	Primary
Host Species/Clonality	Mouse Monoclonal
ASSAY	
Sample Type	HeLa , MCF-7, SH-SY5Y
Sample Concentration	0.2 mg/mL
Antibody Concentration	1:50
Antibody Diluent	
Detection Mode	Chemiluminescence
Separation Type	Size
Matrix	12-230 kDa
Observed kDa	54 kDa

PUBLICATIONS
None Listed

This antibody is validated for Gel-Free, Blot Free, Hands Free Simple Western Systems. To learn about Simple Western Systems, available Simple Western antibodies, or new antibody submissions visit the links below. For additional information, please contact support@proteinsimple.com.

[Simple Western Systems](#)

[Simple Western Antibody Database](#)

[Simple Western Antibody Submission](#)