

SIMPLE WESTERN CERTIFIED ANTIBODY DATASHEET

[View Antibody Link](#)

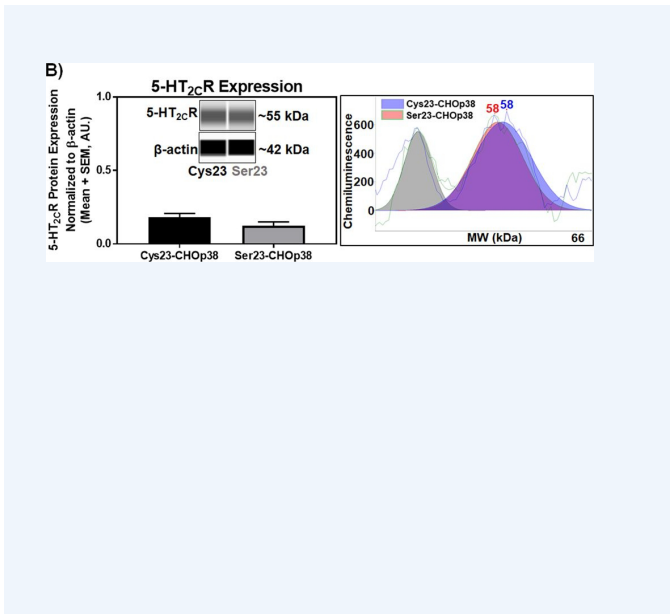


Figure 1: Total 5-HT2CR protein levels do not differ between the Cys23- and Ser23-CHOp38 cell lines. (A) Representative saturation binding isotherm of stably transfected Cys23 and Ser23 5-HT2CR-CHOp38 cells. Results obtained for KD and Bmax values were from 3 independent experiments. Total homogenate (B) 5-HT2CR (n.s. n = 7), (C) TfR (n.s. n = 3) and (D) p38 (n.s. n = 6) protein expression normalized to β-actin in stably expressing Cys23 and Ser23 5-HT2CR-CHOp38 cells. Representative virtual blot-like images (left) and electropherograms adjusted to baseline (right) were generated by the Simple Western Compass software using the area under the curve for the peak of interest. Full length electropherograms and virtual blot-like images are located in Supplementary Figure 2.

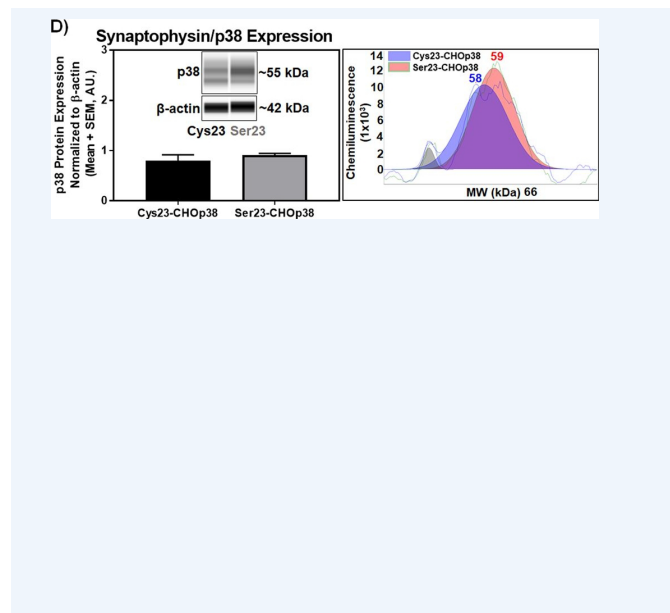


Figure 2: Total 5-HT2CR protein levels do not differ between the Cys23- and Ser23-CHOp38 cell lines. (A) Representative saturation binding isotherm of stably transfected Cys23 and Ser23 5-HT2CR-CHOp38 cells. Results obtained for KD and Bmax values were from 3 independent experiments. Total homogenate (B) 5-HT2CR (n.s. n = 3) and (D) p38 (n.s. n = 6) protein expression normalized to β-actin in stably expressing Cys23 and Ser23 5-HT2CR-CHOp38 cells. Representative virtual blot-like images (left) and electropherograms adjusted to baseline (right) were generated by the Simple Western Compass software using the area under the curve for the peak of interest. Full length electropherograms and virtual blot-like images are located in Supplementary Figure 2.

*Image collected and cropped by CiteAb from the following publication (<https://www.ncbi.nlm.nih.gov/pmc/articles/PMC4612827/>) licensed under a CC-BY license

PROTEIN TARGET/ANTIBODY	
Protein Target	β -Actin (D6A8)
Protein Isoform	Unmodified
Antibody Type	Primary
Host Species/Clonality	Rabbit Monoclonal
ASSAY	
Sample Type	CHO
Sample Concentration	Not_Stated
Antibody Concentration/Dilution	1:50
Antibody Diluent	
Detection Mode	Chemiluminescence
Separation Type	Size
Matrix	Not_Stated
Observed kDa	Not_Stated

PUBLICATIONS	
1.	Xu, X. D., Shao, S. X., et al. The study of energy metabolism in bladder cancer cells in co-culture conditions using a microfluidic chip. <i>Int J Clin Exp Med</i> . 2015;8(8):12327-36. NULL. PMID:26550142.
2.	Price, A. E., Stutz, S. J., et al. Anterior insula activity regulates the associated behaviors of high fat food binge intake and cue reactivity in male rats. <i>Appetite</i> . 2019 Feb 1;133(NULL):231-239. 10.1016/J.APPET.2018.11.011. PMID:30447231.
3.	Luo, Y., Dong, Y., et al. CpG Oligodeoxynucleotide Promotes Apoptosis of Human Bladder Cancer T24 Cells Via Inhibition of the Antiapoptotic Factors. <i>Technol Cancer Res Treat</i> . 2019 Jan 1;18(NULL):1533033819873636. 10.1177/1533033819873636. PMID:31547786.
4.	Land, M. A., Chapman, H. L., et al. Serotonin 5-HT _{2C} Receptor Cys23Ser Single Nucleotide Polymorphism Associates with Receptor Function and Localization In Vitro. <i>Sci Rep</i> . 2019 Nov 13;9(1):16737. 10.1038/S41598-019-53124-2. PMID:31723224.

This antibody is certified for Gel-Free, Blot Free, Hands Free Simple Western Systems. To learn about Simple Western Systems, available Simple Western antibodies, or new antibody submissions visit the links below. For additional information, please contact support@proteinsimple.com.

[Simple Western Systems](#)

[Simple Western Antibody Database](#)

[Simple Western Antibody Submission](#)

PAGE 2/2