

SIMPLE WESTERN CERTIFIED ANTIBODY DATASHEET

[View
Antibody Link](#)

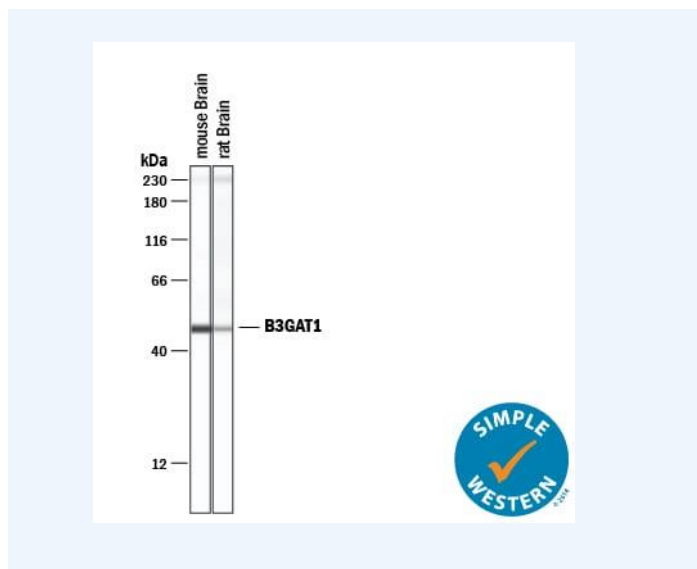


Figure1 Simple Western lane view shows lysates of mouse brain tissue and rat brain tissue, loaded at 0.2 mg/mL. A specific band was detected for beta -1,3-Glucuronyltransferase 1/B3GAT1 at approximately 48 kDa (as indicated) using 20 µg/mL of Mouse Anti-Human beta -1,3-Glucuronyltransferase 1/B3GAT1 Monoclonal Antibody (Catalog # MAB85602). This experiment was conducted under reducing conditions and using the 12-230 kDa separation system.

PROTEIN TARGET/ANTIBODY	
Protein Target	beta-1,3-Glucuronyltransferase 1/B3GAT1
Protein Isoform	beta-1,3-Glucuronyltransferase 1/B3GAT1 Antibody (1021209) [Unconjugated]
Antibody Type	Primary
Host Species/Clonality	Mouse Monoclonal
ASSAY	
Sample Type	Mouse brain tissue and Rat brain tissue 0.2 mg/mL
Sample Concentration	0.2 mg/mL
Antibody Concentration/Dilution	20 µg/mL
Antibody Diluent	
Detection Mode	Chemiluminescence
Separation Type	Size
Matrix	12-230 kDa
Observed kDa	48 kDa
Publications	None listed

This antibody is validated for Gel-Free, Blot Free, Hands Free Simple Western Systems. To learn about Simple Western Systems, available Simple Western antibodies, or new antibody submissions visit the links below. For additional information, please contact support@proteinsimple.com.

[Simple Western Systems](#)

[Simple Western Antibody Database](#)

[Simple Western Antibody Submission](#)