

SIMPLE WESTERN CERTIFIED ANTIBODY DATASHEET

[View
Antibody Link](#)

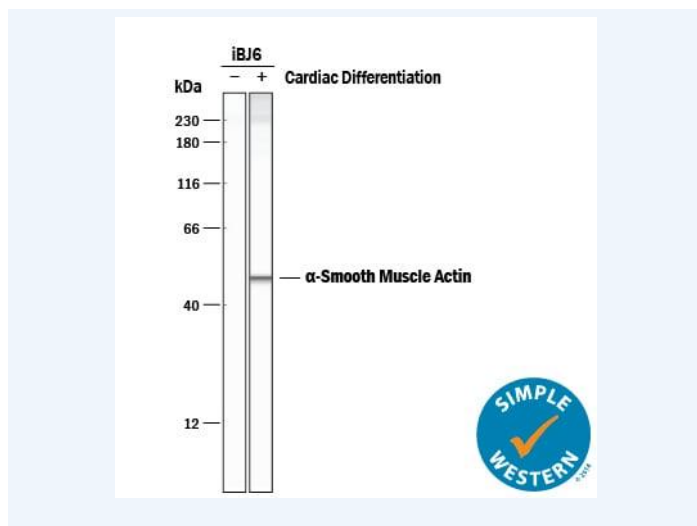


Figure1 Simple Western lane view shows lysates of iBJ6 human induced pluripotent stem cell line untreated (-) or differentiated to cardiomyocytes (+), loaded at 0.2 mg/mL. A specific band was detected for alpha -Smooth Muscle Actin at approximately 49 kDa (as indicated) using 10 µg/mL of Mouse Anti-Human/Mouse/Rat alpha -Smooth Muscle Actin Monoclonal Antibody (Catalog # MAB1420). This experiment was conducted under reducing conditions and using the 12-230 kDa separation system.

PROTEIN TARGET/ANTIBODY	
Protein Target	alpha-Smooth Muscle Actin
Protein Isoform	alpha-Smooth Muscle Actin
Antibody Type	Primary
Host Species/Clonality	Mouse Monoclonal
ASSAY	
Sample Type	iBJ6 human induced pluripotent stem cell line differentiated to cardiomyocytes
Sample Concentration	0.2 mg/mL
Antibody Concentration/Dilution	10 µg/mL
Antibody Diluent	
Detection Mode	Chemiluminescence
Separation Type	Size
Matrix	12-230 kDa
Observed kDa	49 kDa
Publications	None listed

This antibody is certified for Gel-Free, Blot Free, Hands Free Simple Western Systems. To learn about Simple Western Systems, available Simple Western antibodies, or new antibody submissions visit the links below. For additional information, please contact support@proteinsimple.com.

[Simple Western Systems](#)

[Simple Western Antibody Database](#)

[Simple Western Antibody Submission](#)