

SIMPLE WESTERN CERTIFIED ANTIBODY DATASHEET

[View
Antibody Link](#)

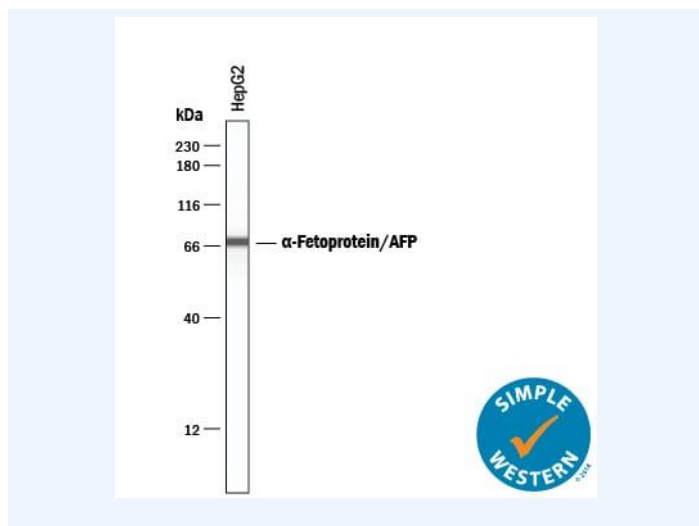


Figure1 Simple Western lane view shows lysates of HepG2 human hepatocellular carcinoma cell line, loaded at 0.2 mg/mL. A specific band was detected for α -Fetoprotein/AFP at approximately 70 kDa (as indicated) using 2 μ g/mL of Chicken Anti-Human/Rat α -Fetoprotein/AFP Antigen Affinity-purified Polyclonal Antibody (Catalog # AF1369) followed by HRP-conjugated Anti-Chicken IgY Secondary Antibody. This experiment was conducted under reducing conditions and using the 12-230 kDa separation system.

PROTEIN TARGET/ANTIBODY	
Protein Target	alpha-Fetoprotein/AFP
Protein Isoform	alpha-Fetoprotein/AFP
Antibody Type	Primary
Host Species/Clonality	Chicken Polyclonal
ASSAY	
Sample Type	HepG2 human hepatocellular carcinoma cell line
Sample Concentration	0.2 mg/mL
Antibody Concentration/Dilution	2 μ g/mL
Antibody Diluent	
Detection Mode	Chemiluminescence
Separation Type	Size
Matrix	12-230
Observed kDa	70 kDa
Publications	None listed

This antibody is certified for Gel-Free, Blot Free, Hands Free Simple Western Systems. To learn about Simple Western Systems, available Simple Western antibodies, or new antibody submissions visit the links below. For additional information, please contact support@proteinsimple.com.

[Simple Western Systems](#)

[Simple Western Antibody Database](#)

[Simple Western Antibody Submission](#)