

SIMPLE WESTERN CERTIFIED ANTIBODY DATASHEET

[View
Antibody Link](#)

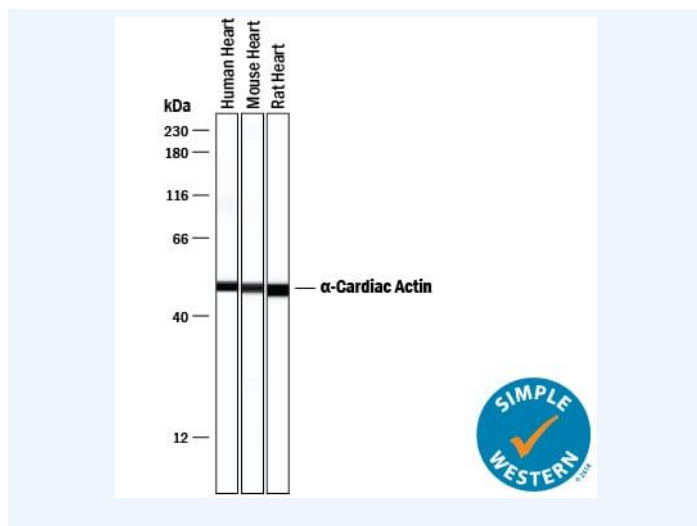


Figure1 Simple Western lane view shows lysates of human, mouse, and rat heart tissue, loaded at 0.2 mg/mL. A specific band was detected for α -Cardiac Actin at approximately 50 kDa (as indicated) using 2 μ g/mL of Mouse Anti-Human/Mouse/Rat α -Cardiac Actin Monoclonal Antibody (Catalog # MAB9308). This experiment was conducted under reducing conditions and using the 12-230 kDa separation system.

| PROTEIN TARGET/ANTIBODY | |
|---------------------------------|------------------------------------|
| Protein Target | alpha-Cardiac Actin |
| Protein Isoform | alpha-Cardiac Actin |
| Antibody Type | Primary |
| Host Species/Clonality | Mouse Monoclonal |
| ASSAY | |
| Sample Type | Human, mouse, and rat heart tissue |
| Sample Concentration | 0.2 mg/mL |
| Antibody Concentration/Dilution | 2 μ g/mL |
| Antibody Diluent | |
| Detection Mode | Chemiluminescence |
| Separation Type | Size |
| Matrix | 12-230 kDa |
| Observed kDa | 50 kDa |
| Publications | None listed |

This antibody is certified for Gel-Free, Blot Free, Hands Free Simple Western Systems. To learn about Simple Western Systems, available Simple Western antibodies, or new antibody submissions visit the links below. For additional information, please contact support@proteinsimple.com.

[Simple Western Systems](#)

[Simple Western Antibody Database](#)

[Simple Western Antibody Submission](#)