

## SIMPLE WESTERN CERTIFIED ANTIBODY DATASHEET

[View  
Antibody Link](#)

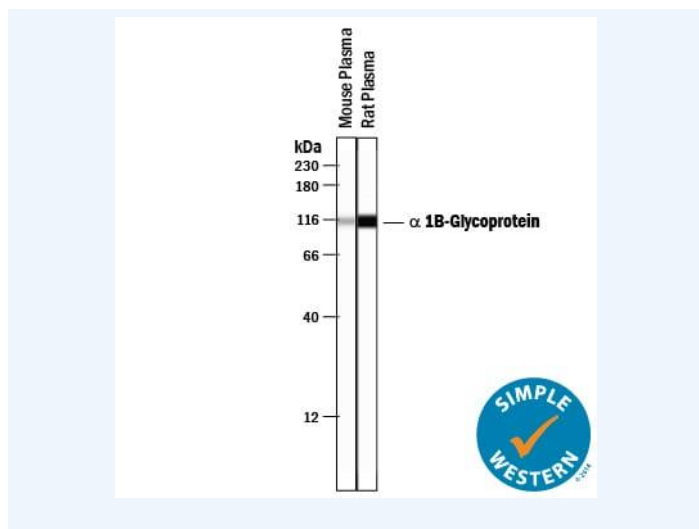


Figure1 Simple Western lane view shows lysates mouse plasma and rat plasma, loaded at 0.2 mg/mL. A specific band was detected for  $\alpha$  1B-Glycoprotein at approximately 113 kDa (as indicated) using 1:100 dilution of Rabbit Anti-Mouse/Rat  $\alpha$  1B-Glycoprotein Antigen Affinity-purified Polyclonal Antibody (Catalog # AF8537) . This experiment was conducted under reducing conditions and using the 12-230 kDa separation system.

PROTEIN TARGET/ANTIBODY	
Protein Target	alpha 1B-Glycoprotein
Protein Isoform	alpha 1B-Glycoprotein
Antibody Type	Primary
Host Species/Clonality	Rabbit Polyclonal
ASSAY	
Sample Type	Mouse plasma and rat plasma
Sample Concentration	0.2 mg/mL
Antibody Concentration/Dilution	1:100 dilution
Antibody Diluent	
Detection Mode	Chemiluminescence
Separation Type	Size
Matrix	12-230 kDa
Observed kDa	113 kDa
Publications	None listed

This antibody is certified for Gel-Free, Blot Free, Hands Free Simple Western Systems. To learn about Simple Western Systems, available Simple Western antibodies, or new antibody submissions visit the links below. For additional information, please contact [support@proteinsimple.com](mailto:support@proteinsimple.com).

[Simple Western Systems](#)

[Simple Western Antibody Database](#)

[Simple Western Antibody Submission](#)