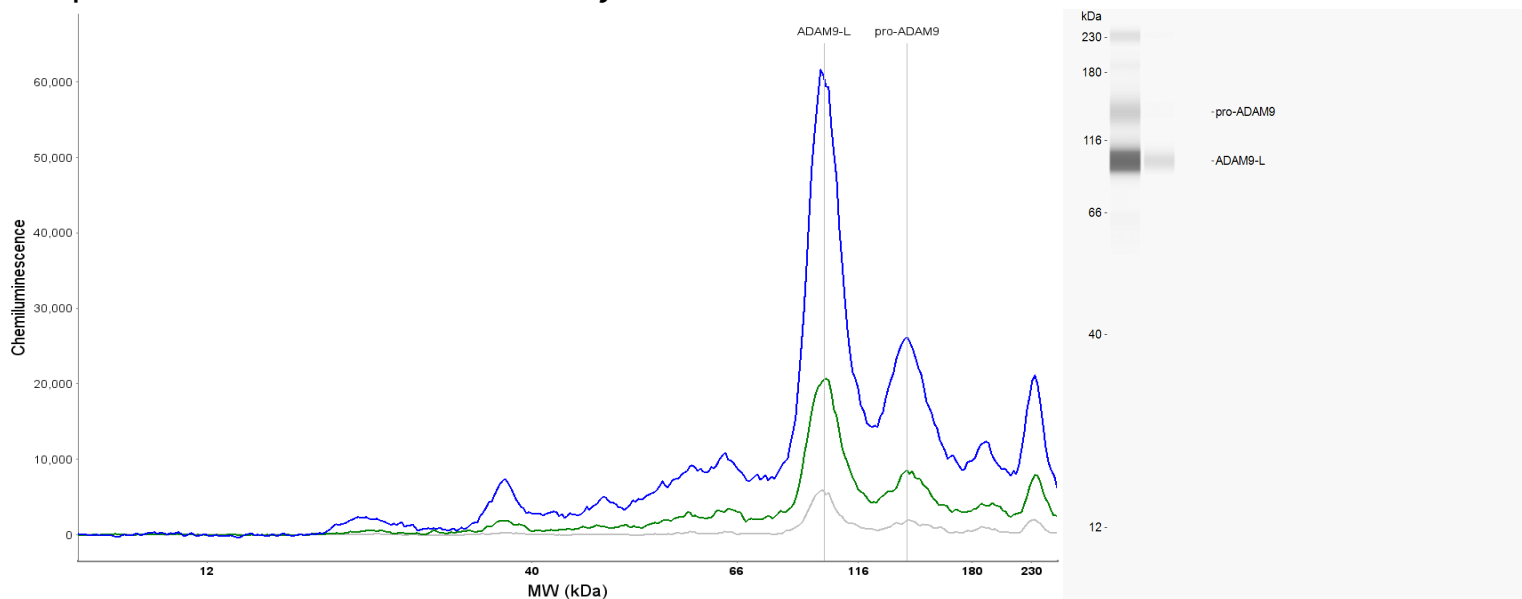


Simple Western Certified Antibody Datasheet



**Antibody**

<b>Target</b>	ADAM9
<b>Host</b>	Rabbit
<b>Clonality</b>	Polyclonal
<b>Type</b>	Primary

**Assay**

<b>Assay Type</b>	Size
<b>Antibody Dilution</b>	1:10, 1:50, 1:250
<b>Detection</b>	Chemiluminescence
<b>Matrix</b>	12–230 kDa
<b>Observed kDa</b>	95, 143–158
<b>Sample Concentration</b>	0.4 mg/mL
<b>Sample Type / Prep.</b>	NCI 460 whole-cell lysate

For additional information on this antibody [view antibody link](#).

This antibody is certified for Simple Western™ technology. To learn about Simple Western technology, available antibodies, or to submit new antibodies, visit the links below. For additional information, please contact: [support@proteinsimple.com](mailto:support@proteinsimple.com)

[Simple Western Systems](#)

[Simple Western Antibody Database](#)

[Submit Antibody Validation Data](#)