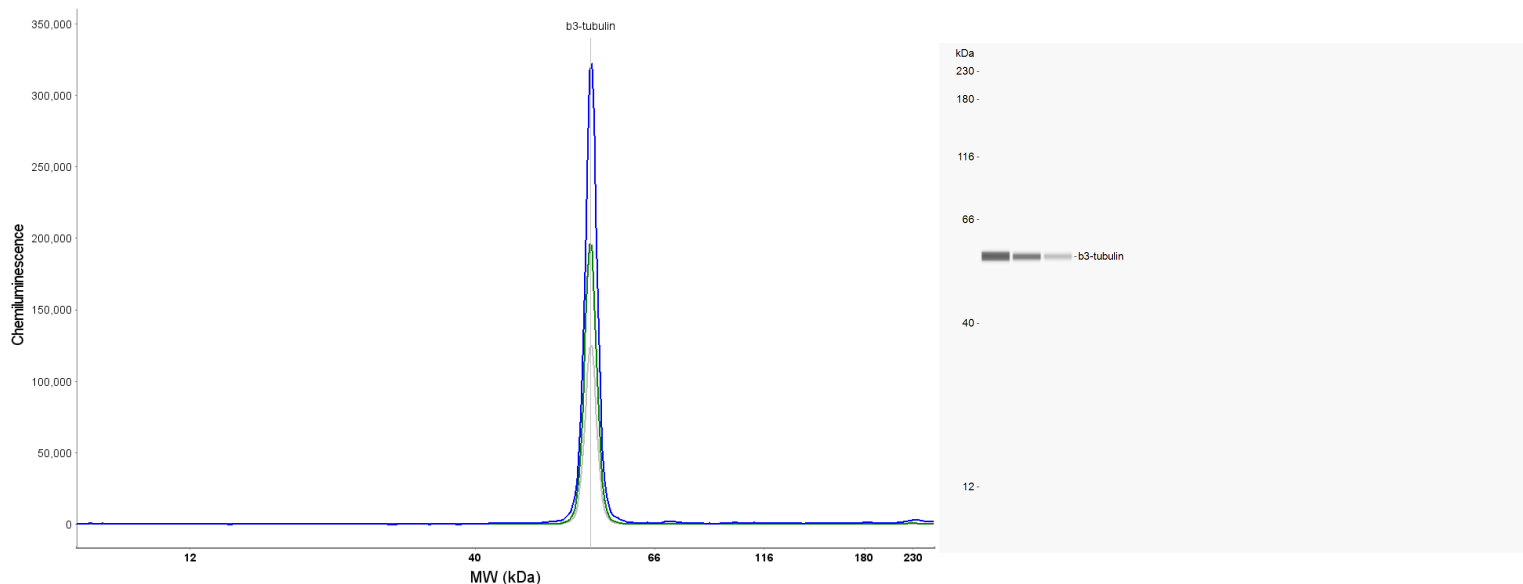


SIMPLE WESTERN CERTIFIED ANTIBODY DATASHEET



Antibody

Antibody Name (Target)	β3-tubulin
Host Species	Mouse
Clonality	Monoclonal
Antibody Type	Primary

Assay

Assay Type	Size
Detection	Chemiluminescence
Matrix	12 - 230 kDa
Observed kDa	57
Antibody Concentration/Dilution	1:10, 1:50, 1:250
Sample Concentration/Dilution	0.2 mg/mL
Sample Type	Neuron (RA induced in vitro neural differentiation of NE-4C)

For additional information on this antibody: [View Antibody Link](#)

This antibody is certified for Gel-Free, Blot Free, Hands Free Simple Western Systems. To learn about Simple Western Systems, available Simple Western antibodies, or new antibody submissions visit the links below. For additional information, please contact support@proteinsimple.com

[Simple Western Systems](#)

[Simple Western Antibody Database](#)

[Simple Western Antibody Submission](#)