

SIMPLE WESTERN CERTIFIED ANTIBODY DATASHEET

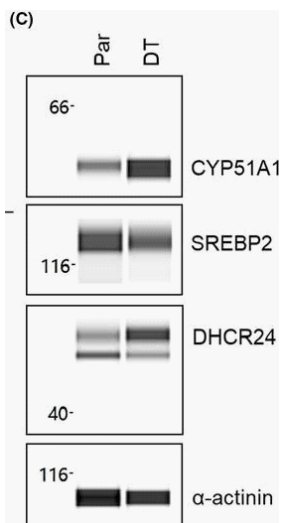


Figure 2C: Upregulation of Cholesterol Metabolism in EGFR TKI Tolerant Cells. A, Gene expression in EGFR TKI treated parental cells. H1299 (N = 3) cells were treated at seeding with 7.5 μ M lapatinib (LP) or 20 μ M gefitinib (Gef) for 14 d. Average fold change \pm SEM, compared to untreated, is shown. An unpaired t test was used to determine significance. B, Cholesterol (chol) content of EGFR TKI treated parental cells. H1299 cells were treated at seeding with 7.5 μ M lapatinib or 15 μ M gefitinib for the indicated number of days. Average fold change \pm SEM, compared to untreated, is shown [Parental (N = 10), LP Day 3 (N = 6), LP day 14 (N = 2), Gef Day 3 (N = 6), Gef Day 14 (N = 4)]. * refers to comparison to day 0. # refers to comparison between two groups connected by the line. ANOVA and the Tukey post hoc test were used to determine the significance. C, Cholesterol synthesis enzyme protein expression in H1975 parental (Par) and lapatinib DT cells. WES automated capillary western blotting o

See reference below for more information.

FASEB Bioadv. 2019 Dec 28;2(2):90-105.
CC BY

Image collected and cropped by CiteAb from:
Under copyright license:

Target/Antibody

Antibody Target/Name	Anti- α -actinin Antibody (H-2)
Isoform	
Reactant	Not stated
Antibody Type	Primary
Host Species/Clonality	Not stated

Assay

Sample Type	Not stated
Antibody Dilution/Concentration	Not stated
Detection Mode	Not stated
Separation Type	SW - Size
Matrix	Not stated
Observed kDa or pI	Not stated
Publications [1 total]	[1] FASEB Bioadv. 2019 Dec 28;2(2):90-105.

For additional information on this antibody: [View Antibody Link](#)

This antibody is certified for Gel-Free, Blot Free, Hands Free Simple Western Systems. To learn about Simple Western Systems, available Simple Western antibodies, or new antibody submissions visit the links below. For additional information, please contact support@proteinsimple.com

[Simple Western Systems](#)

[Simple Western Antibody Database](#)

[Simple Western Antibody Submission](#)