

## SIMPLE WESTERN CERTIFIED ANTIBODY DATASHEET

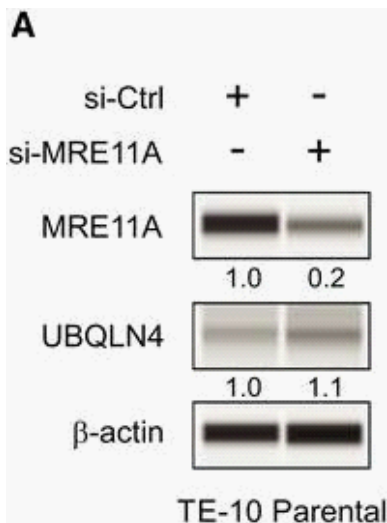


Figure 2A: MRE11A expression determines cisplatin resistance in ESCC cell lines. (A, B) Western blot analysis for MRE11A, UBQLN4, and β actin (loading control) comparing si Ctrl and si MRE11A in TE 10 (A) and TE 8 (B) parental cell lines. (C, D) Drug sensitivity assays comparing si Ctrl or si MRE11A in TE 10 (C) and TE 8 (D) parental cell lines treated with different cisplatin concentrations (\*\*P < 0.01, \*\*\*P < 0.001). (E, F) MRE11A, UBQLN4, and β actin (loading control) comparing EV and MRE11A OV in TE 10 (E) or TE 8 (F) parental cell lines. (G, H) Drug sensitivity assays for TE 10 (G) and TE 8 (H), EV or MRE11A OV parental cell lines treated with different cisplatin concentrations (\*\*P < 0.01, \*\*\*P < 0.001). (I, J) Drug sensitivity assays for TE 10 (I) and TE 8 (J) parental or established cisplatin resistant (Cis Res) cell lines treated with different cisplatin concentrations (\*P < 0.05, \*\*\*P < 0.001). (K, L) Western blot analysis for MRE11A, UBQLN4, and β actin (loading control) com

See reference below for more information.

Image collected and cropped by CiteAb from:  
Under copyright license:

Mol Oncol. 2021 Apr;15(4):1069-1087.  
CC-BY

### Target/Antibody

Antibody Target/Name	Ubiquilin-4
Isoform	
Reactant	Homo sapiens (Human)
Antibody Type	Primary
Host Species/Clonality	Mouse Monoclonal

### Assay

Sample Type	TE-10, TE-8
Antibody Dilution/Concentration	1:10
Detection Mode	Chemiluminescence
Separation Type	SW - Size
Matrix	Not_stated
Observed kDa or pl	Not_ Stated
Publications [1 total]	[1] Mol Oncol. 2021 Apr;15(4):1069-1087.

For additional information on this antibody: [View Antibody Link](#)

This antibody is certified for Gel-Free, Blot Free, Hands Free Simple Western Systems. To learn about Simple Western Systems, available Simple Western antibodies, or new antibody submissions visit the links below. For additional information, please contact

[support@proteinsimple.com](mailto:support@proteinsimple.com)

[Simple Western Systems](#)

[Simple Western Antibody Database](#)

[Simple Western Antibody Submission](#)