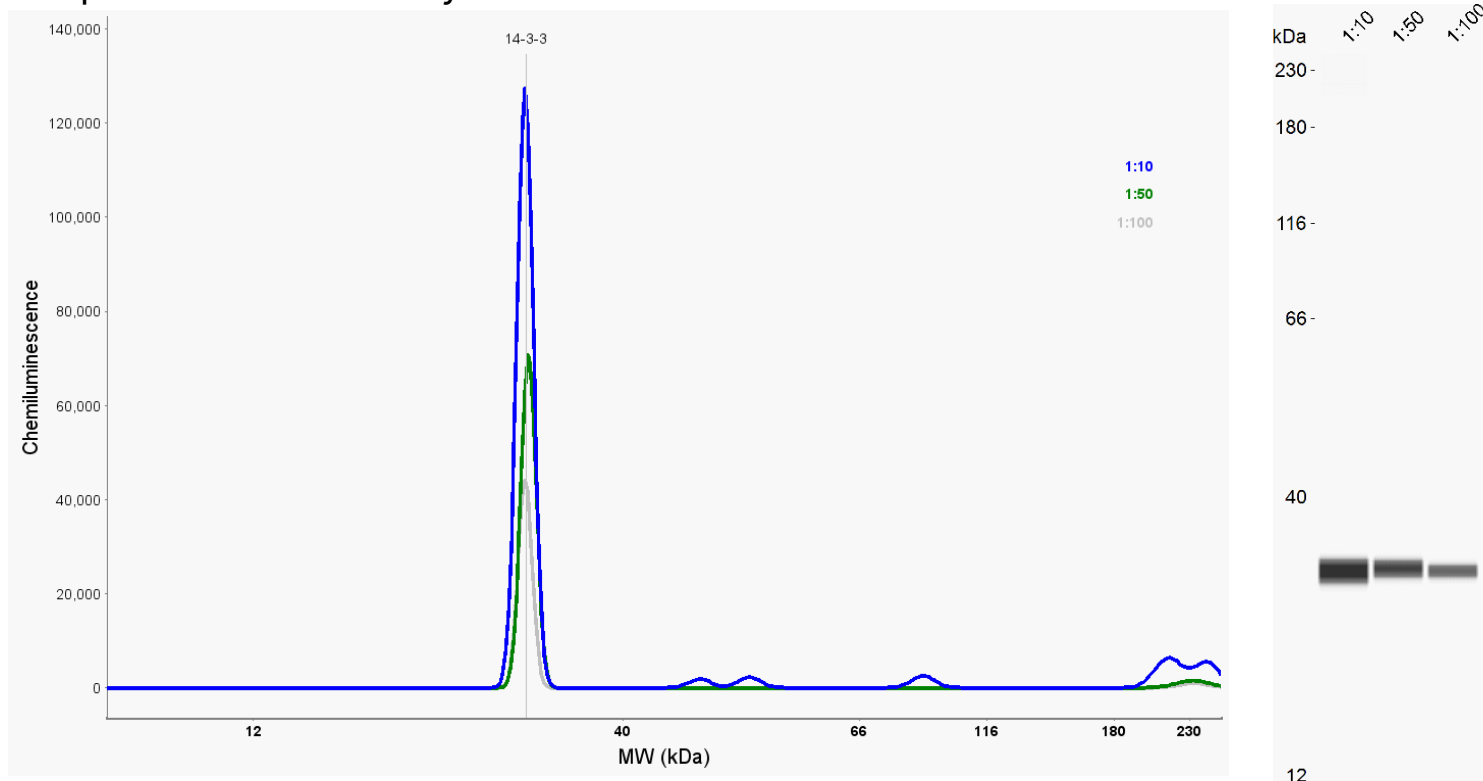


Simple Western Antibody Datasheet



Antibody

Target	14-3-3 (pan)
Host	Mouse
Clonality	Monoclonal
Type	Primary

Assay

Assay Type	Size
Antibody Dilution	1:10, 1:50, 1:100
Detection	Chemiluminescence
Matrix	12–230 kDa
Observed kDa	33
Sample Concentration	1 mg/mL
Sample Type / Prep.	Mouse brain lysates / 95 °C, 5 minutes, reducing (+DTT)

For additional information on this antibody [view antibody link](#).

This antibody is validated for Simple Western™ Technology. To learn about Simple Western Technology, available antibodies, or to submit new antibodies, visit the links below. For additional information, please contact:

support@proteinsimple.com

[Simple Western Systems](#)

[Simple Western Antibody Database](#)

[Submit Antibody](#)

For research use or manufacturing purposes only. Trademarks and registered trademarks are the property of their respective owners.