

Vendor: Santa Cruz Biotechnology

Catalog #: sc-136145

[View Antibody Link](#)

Simple Western Certified Antibody Datasheet

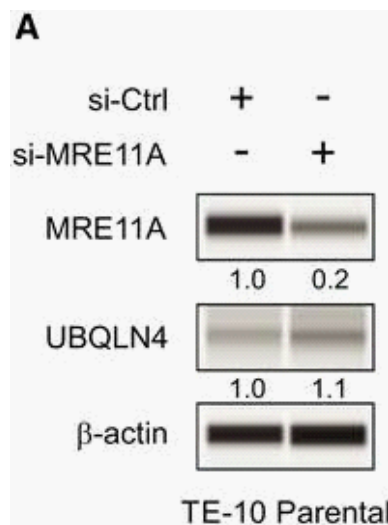


Figure 2A: MRE11A expression determines cisplatin resistance in ESCC cell lines. (A, B) Western blot analysis for MRE11A, UBQLN4, and β -actin (loading control) comparing si-Ctrl and si-MRE11A in TE-10 (A) and TE-8 (B) parental cell lines. (C, D) Drug sensitivity assays comparing si-Ctrl or si-MRE11A in TE-10 (C) and TE-8 (D) parental cell lines treated with different cisplatin concentrations (**P < 0.01, ***P < 0.001). (E, F) MRE11A, UBQLN4, and β -actin (loading control) comparing EV and MRE11A-OV in TE-10 (E) or TE-8 (F) parental cell lines. (G, H) Drug sensitivity assays for TE-10 (G) and TE-8 (H), EV or MRE11A-OV parental cell lines treated with different cisplatin concentrations (**P < 0.01, ***P < 0.001). (I, J) Drug sensitivity assays for TE-10 (I) and TE-8 (J) parental or establishe... See reference below for more information.

Image collected and cropped by CiteAb from: [Mol Oncol. 2021 Apr;15\(4\):1069-1087.](#)

Under copyright license: CC-BY

Antibody

| | |
|----------------------|----------------------|
| Name | A1Up Antibody (A333) |
| Target Antigen | A1Up |
| Reactant | Homo Sapiens (Human) |
| Antibody Type | Primary |
| Host | Mouse |
| Clonality | Monoclonal |
| Alternate Identifier | RRID: AB_2009286 |

Assay

| | |
|------------------------|--------------------------------------|
| Sample Type | TE-10,TE-8 |
| Antibody Dilution | 1:10 |
| Separation Type | Size |
| Observed kDa | |
| Publications (1 found) | Mol Oncol. 2021 Apr;15(4):1069-1087. |

For additional information on this antibody [view antibody link](#).

This antibody is certified for Simple Western™ technology. To learn about Simple Western technology, available antibodies, or to submit new antibodies, visit the links below. For additional information, please contact: support@proteinsimple.com

[Simple Western Systems](#)

[Simple Western Antibody Database](#)

[Submit Antibody Validation Data](#)

biotechne® // Global Developer, Manufacturer, and Supplier of High-Quality Reagents, Analytical Instruments, and Precision Diagnostics.

INCLUDES R&D Systems™ Novus Biologicals™ Tocris Bioscience™ ProteinSimple™ ACD™ ExosomeDx™ Asuragen® Lunaphore™

For research use or manufacturing purposes only. Trademarks and registered trademarks are the property of their respective owners.