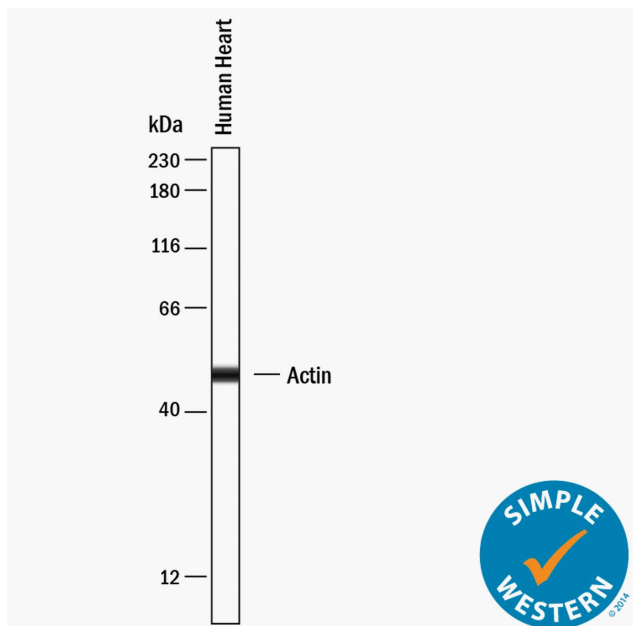


## SIMPLE WESTERN CERTIFIED ANTIBODY DATASHEET



Simple Western lane view shows lysates of Human Heart, loaded at 0.2mg/mL. A specific band was detected for  $\alpha$ -Cardiac Actin at approximately 49kDa (as indicated) using 20 $\mu$ g/mL of Mouse Anti-Human/Mouse/Rat  $\alpha$ -Cardiac Actin Monoclonal Antibody (Catalog # MAB93081). This experiment was conducted under reducing conditions and using the 12-230kDa separation system.

### Antibody

Target	alpha-Cardiac Actin
Host Species	Mouse
Clonality	Monoclonal
Antibody Type	Primary
Recommended Antibody Concentration or Dilution	20
Recommended Sample Concentration	0.2 mg/ml

### Assay

Assay Type	Size
Matrix	12-230kDa
Observed kDa	49
Sample Type	Human Heart

For additional information on this antibody: [View Antibody Link](#)

This antibody is certified for Gel-Free, Blot Free, Hands Free Simple Western Systems. To learn about Simple Western Systems, available Simple Western antibodies, or new antibody submissions visit the links below. For additional information, please contact

[support@proteinsimple.com](mailto:support@proteinsimple.com)

[Simple Western Systems](#)

[Simple Western Antibody Database](#)

[Simple Western Antibody Submission](#)