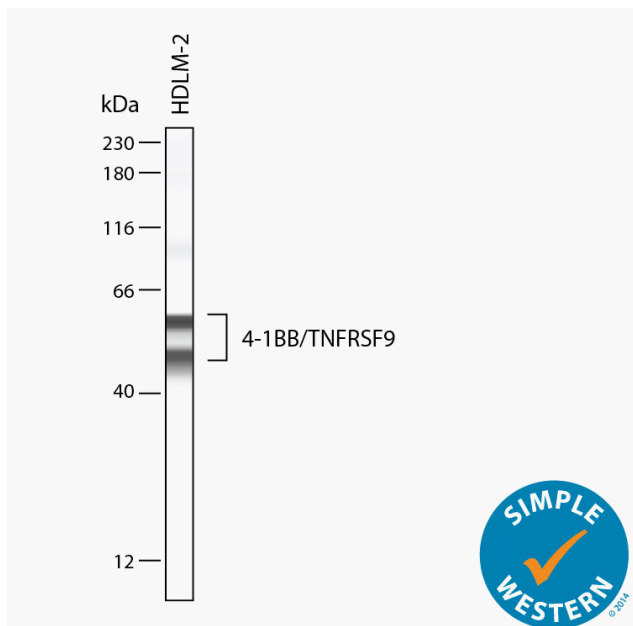


SIMPLE WESTERN CERTIFIED ANTIBODY DATASHEET



Simple Western lane view shows lysates of HDLM2 human Hodgkin's lymphoma cells, loaded at 0.2 mg/mL. Specific bands were detected for 41BB/TNFRSF9/CD137 at approximately 49, 57 kDa (as indicated) using 20 µg/mL of Rabbit Anti-Human 41BB/TNFRSF9/CD137 Monoclonal Antibody (Catalog # MAB8381). This experiment was conducted under reducing conditions and using the 12-230 kDa separation system.



Antibody

Target	4-1BB/TNFRSF9
Host Species	Mouse
Clonality	Monoclonal
Antibody Type	Primary
Recommended Antibody Concentration or Dilution	1:20
Recommended Sample Concentration	0.2 mg/mL

Assay

Assay Type	Size
Matrix	12-230 kDa
Observed kDa	49, 57
Sample Type	HDLM2 human Hodgkin's lymphoma cells

For additional information on this antibody: [View Antibody Link](#)

This antibody is certified for Gel-Free, Blot Free, Hands Free Simple Western Systems. To learn about Simple Western Systems, available Simple Western antibodies, or new antibody submissions visit the links below. For additional information, please contact

support@proteinsimple.com

[Simple Western Systems](#)

[Simple Western Antibody Database](#)

[Simple Western Antibody Submission](#)