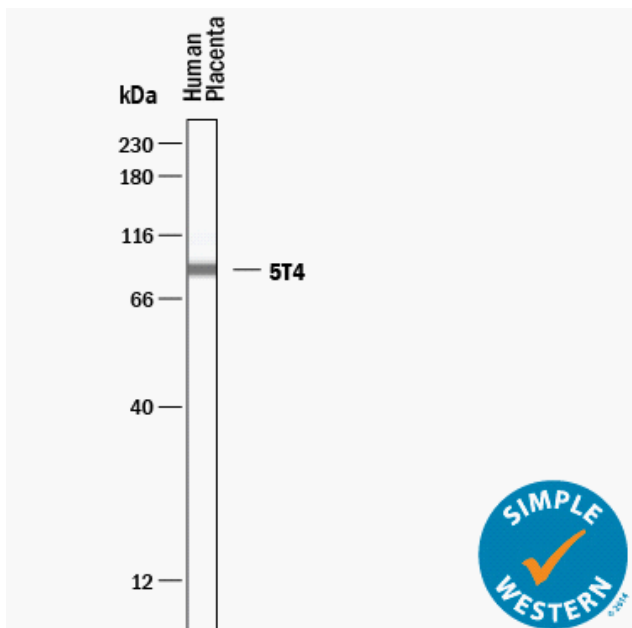


## SIMPLE WESTERN CERTIFIED ANTIBODY DATASHEET



Simple Western lane view shows lysates of human placenta, loaded at 0.2 mg/mL. A specific band was detected for 5T4 at approximately 90 kDa (as indicated) using 50 µg/mL of Sheep Anti-Human 5T4 Antigen Affinity-purified Polyclonal Antibody (Catalog # AF4975) followed by 1:50 dilution of HRP-conjugated Anti-Sheep IgG Secondary Antibody (Catalog# HAF016). This experiment was conducted under reducing conditions and using the 12-230 kDa separation system.

### Antibody

Target	5T4
Host Species	Sheep
Clonality	Polyclonal
Antibody Type	Primary
Recommended Antibody Concentration or Dilution	50 µg/mL
Recommended Sample Concentration	0.2 mg/mL

### Assay

Assay Type	Size
Matrix	12-230 kDa
Observed kDa	90
Sample Type	human placenta

For additional information on this antibody: [View Antibody Link](#)

This antibody is certified for Gel-Free, Blot Free, Hands Free Simple Western Systems. To learn about Simple Western Systems, available Simple Western antibodies, or new antibody submissions visit the links below. For additional information, please contact

[support@proteinsimple.com](mailto:support@proteinsimple.com)

[Simple Western Systems](#)

[Simple Western Antibody Database](#)

[Simple Western Antibody Submission](#)