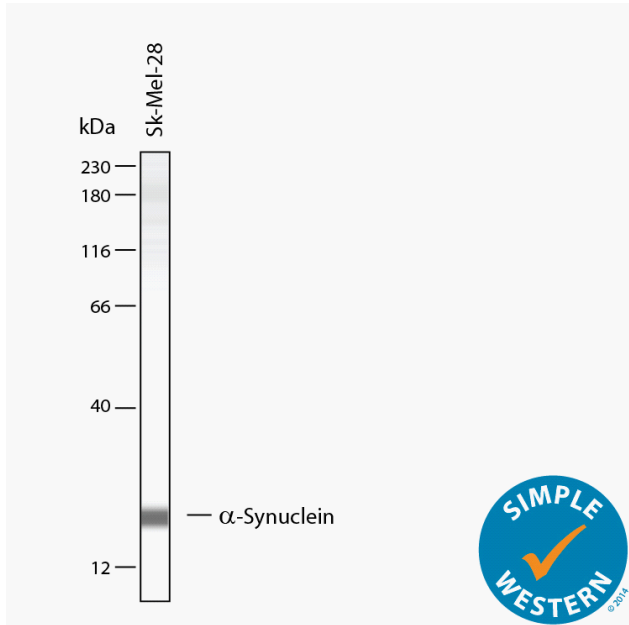


## SIMPLE WESTERN CERTIFIED ANTIBODY DATASHEET



Simple Western lane view shows lysates of Sk-Mel-28, loaded at 0.2 mg/mL. A specific band was detected for α-Synuclein at approximately 21 kDa (as indicated) using 10 µg/mL of Goat Anti-Human α-Synuclein Antigen Affinity-purified Polyclonal Antibody (Catalog # AF1338). This experiment was conducted under reducing conditions and using the 12-230 kDa separation system.

### Antibody

Target	α-Synuclein
Host Species	Goat
Clonality	Polyclonal
Antibody Type	Primary
Recommended Antibody Concentration or Dilution	1:10
Recommended Sample Concentration	0.2 mg/mL

### Assay

Assay Type	Size
Matrix	12-230 kDa
Observed kDa	21
Sample Type	Sk-Mel-28

For additional information on this antibody: [View Antibody Link](#)

This antibody is certified for Gel-Free, Blot Free, Hands Free Simple Western Systems. To learn about Simple Western Systems, available Simple Western antibodies, or new antibody submissions visit the links below. For additional information, please contact

[support@proteinsimple.com](mailto:support@proteinsimple.com)

[Simple Western Systems](#)

[Simple Western Antibody Database](#)

[Simple Western Antibody Submission](#)