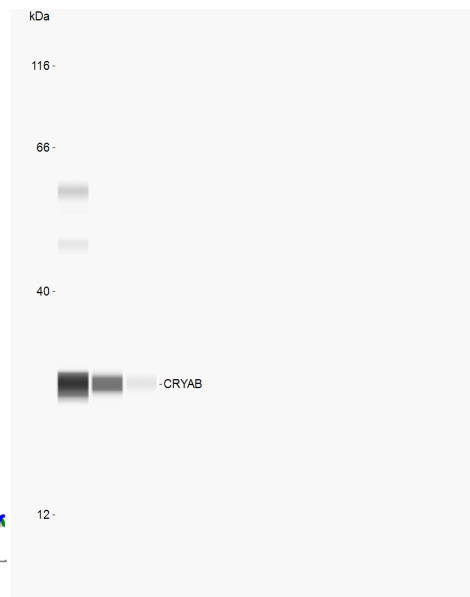
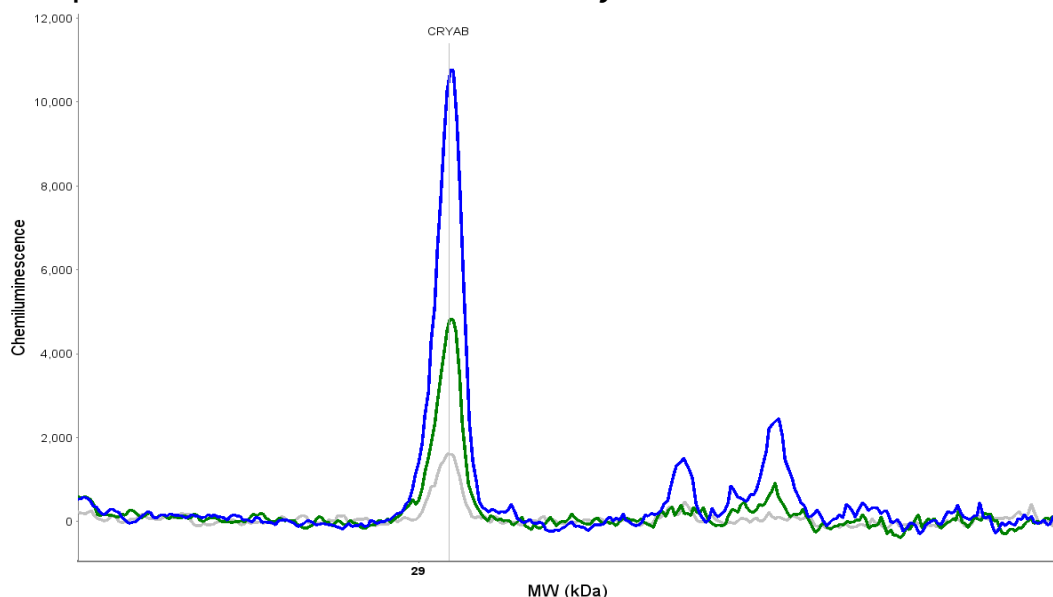


**Simple Western Certified Antibody Datasheet**



**Antibody**

Target	αB Crystallin/CRYAB
Host	Mouse
Clonality	Monoclonal
Type	Primary
Dilution	1:10, 1:50, 1:250

**Assay**

Assay Type	Size
Detection	Chemiluminescence
Matrix	12–230 kDa
Observed kDa	28
Sample Concentration	0.08 mg/mL
Sample Type / Prep.	HSMM – Human Skeletal Muscle Myoblasts whole-cell lysate / 95 °C, 5 minutes, reducing (+DTT)

This antibody is certified for Simple Western™ technology. To learn about Simple Western technology, available antibodies, or to submit new antibodies, visit the links below. For additional information, please contact:

[support@proteinsimple.com](mailto:support@proteinsimple.com)

[Simple Western Systems](#)

[Simple Western Antibody Database](#)

[Submit Antibody Validation Data](#)