

SIMPLE WESTERN CERTIFIED ANTIBODY DATASHEET

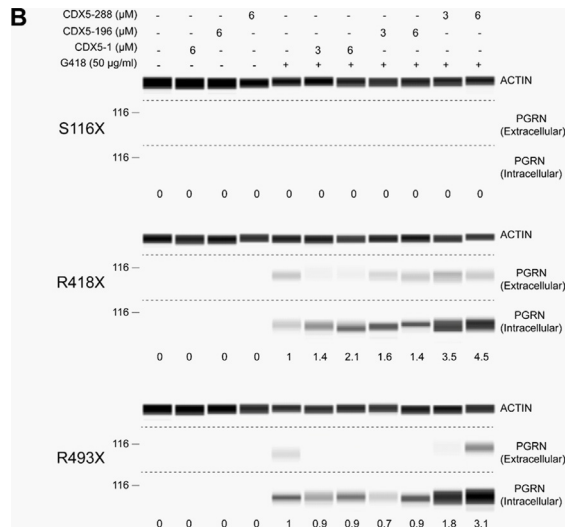


Figure 1B: Induction of PTC readthrough by G418 and CDX5 enhancers in cells expressing GRN-V5. a Schematic of full-length PGRN highlighting the position of the S116X (UAA), R418X (UGA), and R493X (UGA) nonsense mutations in relation to the position of individual granulin peptides and the C-terminal V5 tag. b HEK293 cell lines stably expressing GRN-V5 with the indicated nonsense mutations were treated with G418 and the indicated concentrations of CDX5-1, CDX5-196, and CDX5-288 for 72 h. Cell culture supernatants (extracellular) and cell lysates (intracellular) were subjected to automated capillary electrophoresis western analysis. Full-length PGRN was detected with a V5 antibody. Actin was measured in cell lysates as a loading control. The readthrough enhancement ratios are indicated under the lanes. The proportion loaded was 15–20 fold lower for the extracellular samples than for the intracellular samples

See reference below for more information.

Image collected and cropped by CiteAb from:
Under copyright license:

Mol Neurodegener. 2020 Mar 16;15(1):21.
CC BY

Target/Antibody

Antibody Target/Name	Actin, cytoplasmic 1
Isoform	
Reactant	Homo sapiens (Human)
Antibody Type	Primary
Host Species/Clonality	Rabbit Polyclonal

Assay

Sample Type	Skin
Antibody Dilution/Concentration	Not stated
Detection Mode	Chemiluminescence
Separation Type	Size
Matrix	12-230 kDa
Observed kDa	Not stated
Publications [5 total]	[1] Stem Cells. 2022 Dec 31;40(12):1149-1161. [2] Int J Mol Sci. 2023 Jul 31;24(15):12278. [3] J Neuroendocrinol. 2019 Aug;31(8):e12752. [4] Biochim Biophys Acta Mol Cell Biol Lipids. 2020 Feb;1865(2):158530. [5] Mol Neurodegener. 2020 Mar 16;15(1):21.

For additional information on this antibody: [View Antibody Link](#)

This antibody is certified for Gel-Free, Blot Free, Hands Free Simple Western Systems. To learn about Simple Western Systems, available Simple Western antibodies, or new antibody submissions visit the links below. For additional information, please contact

support@proteinsimple.com

[Simple Western Systems](#)

[Simple Western Antibody Database](#)

[Simple Western Antibody Submission](#)