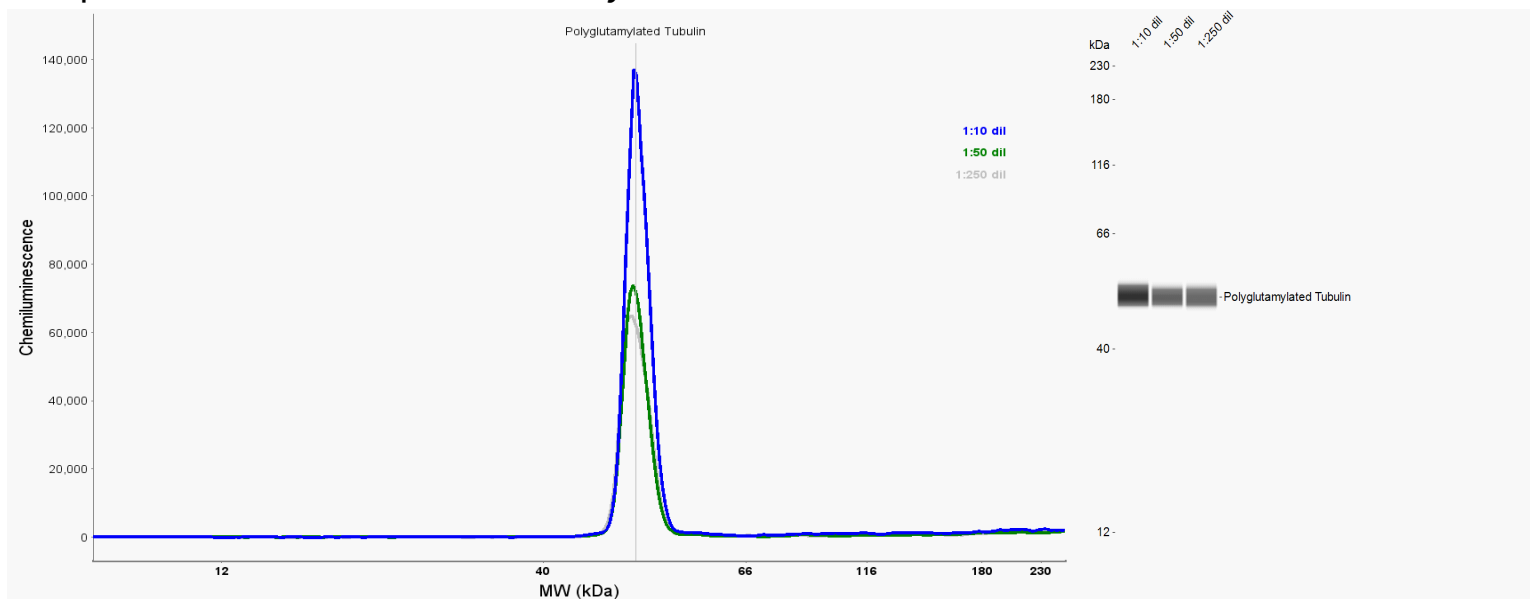


Simple Western Certified Antibody Datasheet



Antibody

Target	Acetylated α -Tubulin
Host	Mouse
Clonality	Monoclonal
Type	Primary

Assay

Assay Type	Size
Antibody Dilution	1:30,000, 1:300,000, 1:1,500,000
Detection	Chemiluminescence
Matrix	12–230 kDa
Observed kDa	53
Sample Concentration	0.12 mg/mL
Sample Type / Prep.	Mouse brain lysate / 95 °C, 5 min, reducing

Publications (2 found) Stem Cell Reports. 2019 Nov 12;13(5):891-905. // Am J Hum Genet. 2018 May 3;102(5):816-831.

For additional information on this antibody [view antibody link](#).

This antibody is certified for Simple Western™ technology. To learn about Simple Western technology, available antibodies, or to submit new antibodies, visit the links below. For additional information, please contact:

support@proteinsimple.com

[Simple Western Systems](#)

[Simple Western Antibody Database](#)

[Submit Antibody Validation Data](#)