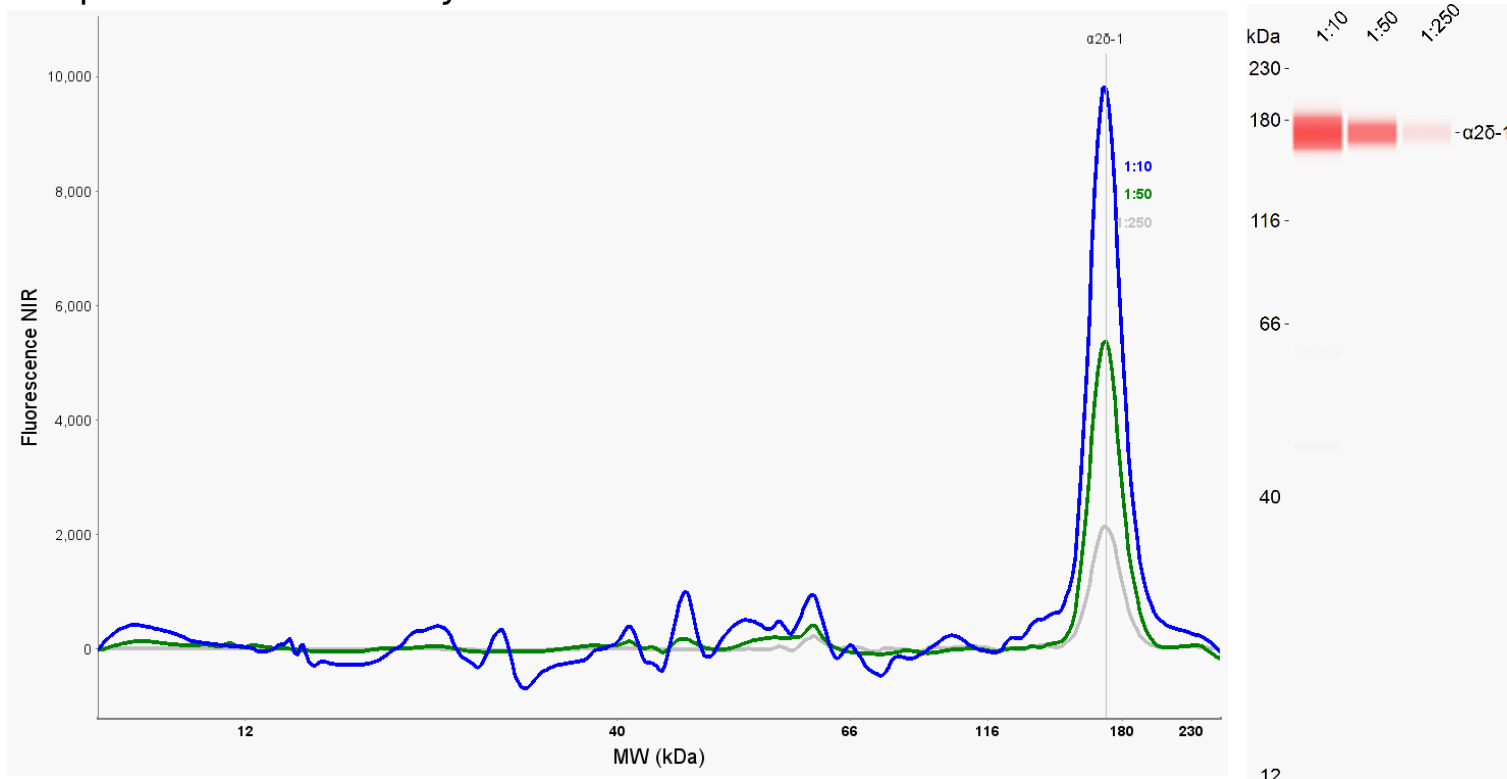


## Simple Western Antibody Datasheet

[View Antibody Link](#)



Antibody	
Target	α2δ-1
Host	Mouse
Clonality	Monoclonal
Type	Primary
Assay	
Assay Type	Size
Antibody Dilution	1:10, 1:50, 1:250
Detection	Fluorescence
Matrix	12–230 kDa
Observed kDa	171
Sample Concentration	0.5 mg/mL
Sample Type / Prep.	Brain homogenate / 37°C, 37 minutes

For additional information on this antibody [view antibody link](#).

This antibody is validated for Simple Western™ Technology. To learn about Simple Western Technology, available antibodies, or to submit new antibodies, visit the links below. For additional information, please contact:

[support@proteinsimple.com](mailto:support@proteinsimple.com)

[Simple Western Systems](#)

[Simple Western Antibody Database](#)

[Submit Antibody](#)

For research use or manufacturing purposes only. Trademarks and registered trademarks are the property of their respective owners.