

## SIMPLE WESTERN CERTIFIED ANTIBODY DATASHEET

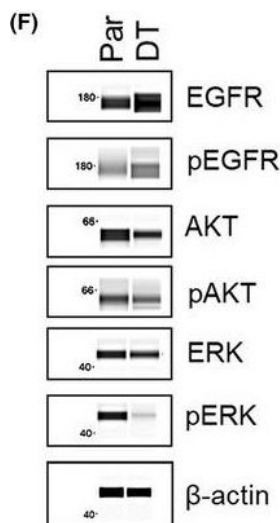


Figure 1F: Establishment and Characterization of Acquired Lapatinib Tolerant Cell Lines. A, Lapatinib sensitivity in parental (Par) and lapatinib DT cell lines. H1650 (N = 6), H1299 (N = 8), H1975 (N = 6), and LLC\_ (N = 3) cells were treated the day after seeding with varying concentrations of the lapatinib for 48 h. Average IC50 value  $\pm$  SEM is shown. A paired t test was used to determine the significance. B, Annexin V/PI staining of parental and lapatinib DT H1975 cells after exposure to lapatinib (LP). Cells were treated the day after seeding with 20  $\mu$ M of lapatinib or vehicle for 48 h (N = 2). C, H1650 cell line grown on the FiSS (100X). D, A comparison of drug sensitivity in parental and lapatinib DT H1650 cell lines cultured on monolayer vs. FiSS. Monolayer drug sensitivity experiments were performed as described above. For FiSS drug sensitivity experiments cells were treated on day 5 after seeding, in triplicates, with varying concentrations of the identified drug for 48 h. Average

See reference below for more information.

Image collected and cropped by CiteAb from:  
Under copyright license:

FASEB Bioadv. 2019 Dec 28;2(2):90-105.  
CC BY

### Target/Antibody

Antibody Target/Name	Actin, cytoplasmic 1
Isoform	Unmodified
Reactant	Homo sapiens (Human)
Antibody Type	Primary
Host Species/Clonality	Mouse Monoclonal

### Assay

Sample Type	MDA-MB-231T
Antibody Dilution/Concentration	1:100
Detection Mode	Chemiluminescence
Separation Type	SW - Size
Matrix	12-230 kDa
Observed kDa or pI	Not stated
Publications [7 total]	[1] Cancers (Basel). 2022 Aug 13;14(16):3913. [2] Front Cell Neurosci. 2021 Feb 19;15:636707. [3] JID Innov. 2022 Feb 22;2(3):100111. [4] PLoS One. 2022 May 12;17(5):e0268217. [5] Neurobiol Dis. 2021 Jan;147:105149. [6] FASEB Bioadv. 2019 Dec 28;2(2):90-105. [7] Sci Rep. 2019 Dec 3;9(1):18177.

For additional information on this antibody: [View Antibody Link](#)

This antibody is certified for Gel-Free, Blot Free, Hands Free Simple Western Systems. To learn about Simple Western Systems, available Simple Western antibodies, or new antibody submissions visit the links below. For additional information, please contact

[support@proteinsimple.com](mailto:support@proteinsimple.com)

[Simple Western Systems](#)

[Simple Western Antibody Database](#)

[Simple Western Antibody Submission](#)