

## SIMPLE WESTERN CERTIFIED ANTIBODY DATASHEET

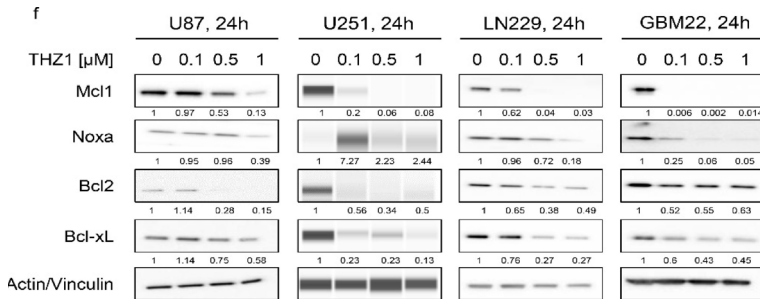


Figure 2F: THZ1, suppresses Mcl-1 at the transcriptional level by disruption of its super-enhancer. (a) Real-time PCR analysis of Mcl1 mRNA levels in several GBM cells treated with vehicle or THZ1 for 24 h (n = 4). U87, U251, LN229, KNS42, and GBM22 cells were treated with 100 nM THZ1 while GBM14 was treated with 50 nM THZ1. Statistical significance was determined by two-tailed Student's t-test; (b) U87 GBM cells were treated with DMSO or THZ1 100 nM for 24 h, subjected to CHIP with H3K27ac antibody and submitted for next generation sequencing. Super-enhancers were called using HOMER and depicted as a heatmap. The middle of each plot highlights the center of the super-enhancers (from -50 kb to 50 kb). The super enhancers are ranked by size and intensity levels are provided in the legend. The scale bar indicates the intensities. Blue depicts a high intensity level and red depicts a low intensity level; (c) A representation of global disruption of the super-enhancer landscape of U87 treated

See reference below for more information.

Image collected and cropped by CiteAb from:  
Under copyright license:

Cancers (Basel). 2020 Aug 1;12(8):2137.  
CC BY

### Target/Antibody

Antibody Target/Name	Actin, cytoplasmic 1
Isoform	
Reactant	Rattus norvegicus (Rat)
Antibody Type	Primary
Host Species/Clonality	Mouse Monoclonal

### Assay

Sample Type	Brain, Placenta
Antibody Dilution/Concentration	1:4000
Detection Mode	Chemiluminescence
Separation Type	SW - Size
Matrix	Not stated
Observed kDa or pI	Not stated
Publications [5 total]	[1] Am J Reprod Immunol. 2019 Jun;81(6):e13115. [2] Nat Commun. 2017 Oct 20;8(1):1067. [3] Nature. 2020 Jan;577(7789):254-259. [4] Cell. 2020 Nov 25;183(5):1420-1435.e21. [5] Cancers (Basel). 2020 Aug 1;12(8):2137.

For additional information on this antibody: [View Antibody Link](#)

This antibody is certified for Gel-Free, Blot Free, Hands Free Simple Western Systems. To learn about Simple Western Systems, available Simple Western antibodies, or new antibody submissions visit the links below. For additional information, please contact [support@proteinsimple.com](mailto:support@proteinsimple.com)

[Simple Western Systems](#)

[Simple Western Antibody Database](#)

[Simple Western Antibody Submission](#)