

SIMPLE WESTERN VALIDATED ANTIBODY DATASHEET

[View Antibody Link](#)

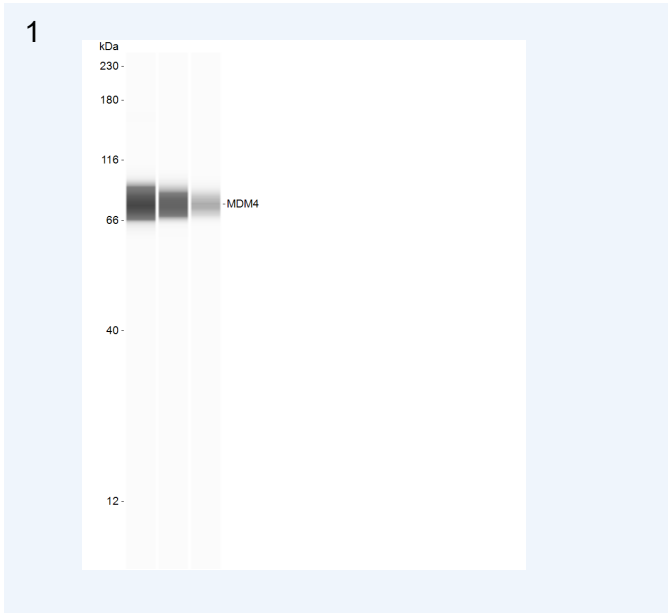


Figure 1: Simple Western Lane view shows MDM4 antibody at 1:10, 1:50, 1:100 dilution in A375 cell line at 0.4 mg/mL using 12 - 230 kDa separation system . Customer submitted data.

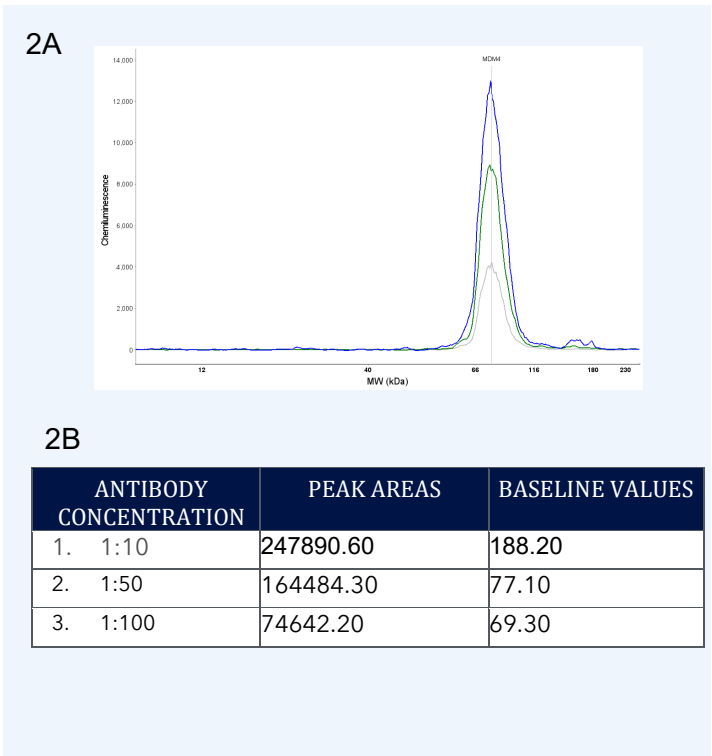


Figure 2A: Simple Western Electropherogram of MDM4 antibody was used at 1:10, 1:50, 1:100 dilution in A375 cell line at 0.4 mg/mL. Customer submitted data.

2B

ANTIBODY CONCENTRATION	PEAK AREAS	BASELINE VALUES
1. 1:10	247890.60	188.20
2. 1:50	164484.30	77.10
3. 1:100	74642.20	69.30

Figure 2B: Table range of antibody concentrations tested and peak areas and baseline values. Customer submitted data.

PROTEIN TARGET/ANTIBODY	
Protein Target	MDM4
Protein Isoform	
Antibody Type	Primary
Host Species/Clonality	Rabbit Monoclonal
ASSAY	
Sample Type	A375 cell line
Sample Concentration	0.08 mg/ml, 0.4 mg/ml and 2 mg/ml
Antibody Concentration	1 µg/ml (1/100), 2 µg/ml (1/50) and 10 µg/ml (1/10)
Antibody Diluent	Antibody Diluent 2
Detection Mode	Chemiluminescent
Separation Type	Size
Matrix	12 - 230 kDa
Observed kDa	<div>73-81</div>

PUBLICATIONS

This antibody is validated for Gel-Free, Blot Free, Hands Free Simple Western Systems. To learn about Simple Western Systems, available Simple Western antibodies, or new antibody submissions visit the links below. For additional information, please contact support@proteinsimple.com.

[Simple Western Systems](#)

[Simple Western Antibody Database](#)

[Simple Western Antibody Submission](#)