

SIMPLE WESTERN CERTIFIED ANTIBODY DATASHEET

[View Antibody Link](#)

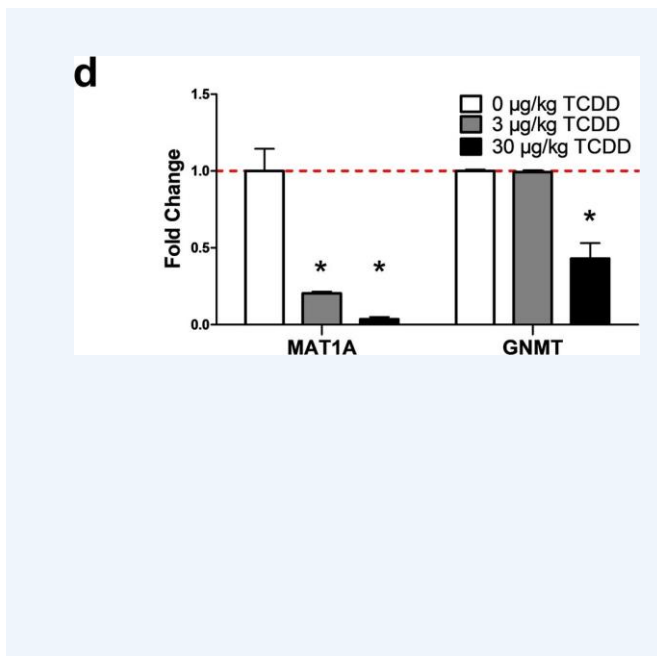


Figure: TCDD-elicited repression of SAM biosynthesis and methyltransferase gene expression. Fold change for hepatic MAT1A and GNMT protein levels after 28 days measured by the WES capillary electrophoresis system (mean ± s.e.m., n = 4).

PROTEIN TARGET/ANTIBODY	
Protein Target	MAT1A
Protein Isoform	
Antibody Type	Primary
Host Species/Clonality	Rabbit Polyclonal
ASSAY	
Sample Type	Liver
Sample Concentration	Not_Stated
Antibody Concentration/Dilution	1:200
Antibody Diluent	
Detection Mode	Chemiluminescence
Separation Type	Size
Matrix	Not_Stated
Observed kDa	Not_Stated

\*Image collected and cropped by CiteAb from the following publication <https://www.nature.com/articles/s41598-020-71795-0> licensed under a CC-BY license

## PUBLICATIONS

1. Fling, R. R., Doskey, C. M., et al. 2,3,7,8-Tetrachlorodibenzo-p-dioxin (TCDD) dysregulates hepatic one carbon metabolism during the progression of steatosis to steatohepatitis with fibrosis in mice. Sci Rep. 2020 Sep 9;10(1):14831. 10.1038/S41598-020-71795-0. PMID:32908189.
- 2.
- 3.
- 4.
- 5.
- 6.

This antibody is validated for Gel-Free, Blot Free, Hands Free Simple Western Systems. To learn about Simple Western Systems, available Simple Western antibodies, or new antibody submissions visit the links below. For additional information, please contact [support@proteinsimple.com](mailto:support@proteinsimple.com).

[Simple Western Systems](#)

[Simple Western Antibody Database](#)

[Simple Western Antibody Submission](#)

PAGE 2/2

**bio-technne**<sup>®</sup>

[bio-technne.com](http://bio-technne.com)

**Global** [info@bio-technne.com](mailto:info@bio-technne.com) [bio-technne.com/find-us/distributors](http://bio-technne.com/find-us/distributors) TEL +1 612 379 2956  
**North America** TEL 800 343 7475 **Europe | Middle East | Africa** TEL +44 (0)1235 529449  
**China** [info.cn@bio-technne.com](mailto:info.cn@bio-technne.com) TEL +86 (21) 52380373

Trademarks and registered trademarks are the property of their respective owners.