

## SIMPLE WESTERN CERTIFIED ANTIBODY DATASHEET

[View  
Antibody Link](#)

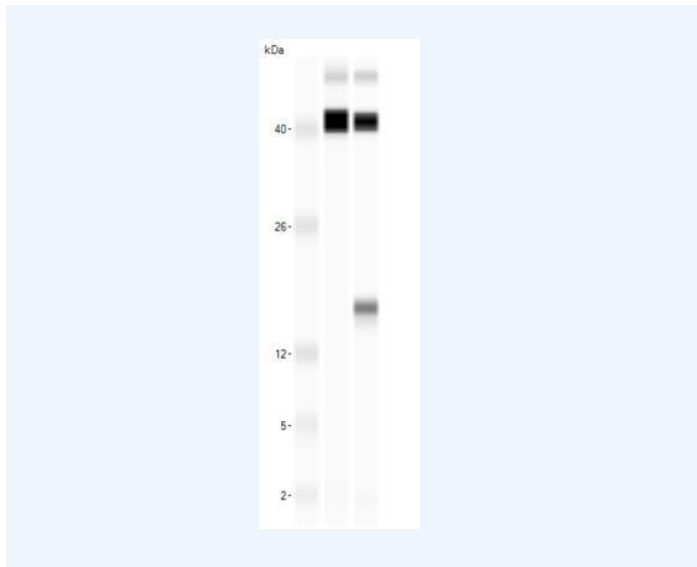


Figure1 Leptin/OB Antibody [NBP1-59324] - Simple Western analysis of Leptin. Lane 1- biotinylated ladder; Lane 2- negative control (non-transfected MIN6 cells, 0.2 mg/ml); Lane 3- MIN6 cells transfected with plasmid expressing mouse leptin (positive control, 0.2 mg/ml). Image from verified customer review.

PROTEIN TARGET/ANTIBODY	
Protein Target	Leptin/OB
Protein Isoform	Leptin/OB Antibody
Antibody Type	Primary
Host Species/Clonality	Rabbit Polyclonal
ASSAY	
Sample Type	MIN6 cells, non-transfected and transfected with plasmid expressing mouse leptin, both at 0.2 mg/ml
Sample Concentration	0.2 mg/ml
Antibody Concentration/Dilution	
Antibody Diluent	
Detection Mode	Chemiluminescence
Separation Type	Size
Matrix	12-230 kDa
Observed kDa	
Publications	None listed

This antibody is validated for Gel-Free, Blot Free, Hands Free Simple Western Systems. To learn about Simple Western Systems, available Simple Western antibodies, or new antibody submissions visit the links below. For additional information, please contact [support@proteinsimple.com](mailto:support@proteinsimple.com).

[Simple Western Systems](#)

[Simple Western Antibody Database](#)

[Simple Western Antibody Submission](#)