

SIMPLE WESTERN CERTIFIED ANTIBODY DATASHEET

[View
Antibody Link](#)

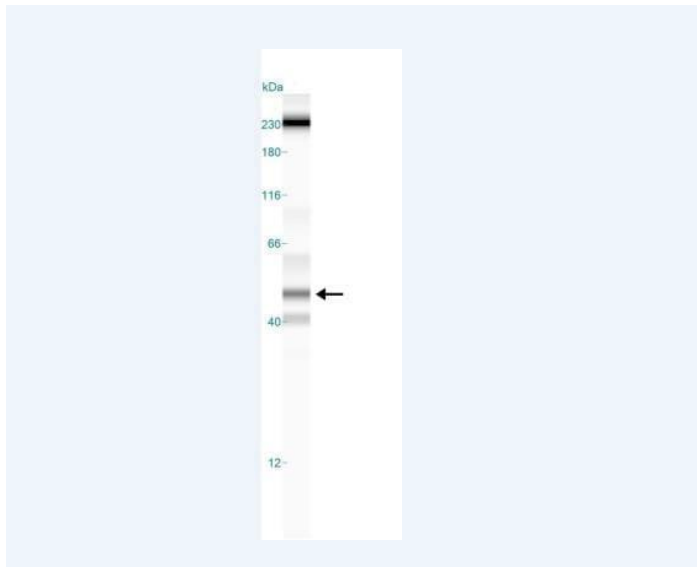


Figure1 LXR alpha/NR1H3 Antibody [NB400-157] - Simple Western lane view shows a ~49 kDa for LXR in human skeletal muscle tissue lysate under reducing conditions. Image from verified customer review.

PROTEIN TARGET/ANTIBODY	
Protein Target	LXR alpha/NR1H3
Protein Isoform	LXR alpha/NR1H3 Antibody
Antibody Type	Primary
Host Species/Clonality	Rabbit Polyclonal
ASSAY	
Sample Type	Human skeletal muscle tissue lysate under reducing conditions
Sample Concentration	
Antibody Concentration/Dilution	
Antibody Diluent	
Detection Mode	Chemiluminescence
Separation Type	Size
Matrix	12-230 kDa
Observed kDa	49 kDa
Publications	None listed

This antibody is validated for Gel-Free, Blot Free, Hands Free Simple Western Systems. To learn about Simple Western Systems, available Simple Western antibodies, or new antibody submissions visit the links below. For additional information, please contact support@proteinsimple.com.

[Simple Western Systems](#)

[Simple Western Antibody Database](#)

[Simple Western Antibody Submission](#)