

Simple Western Antibody Datasheet

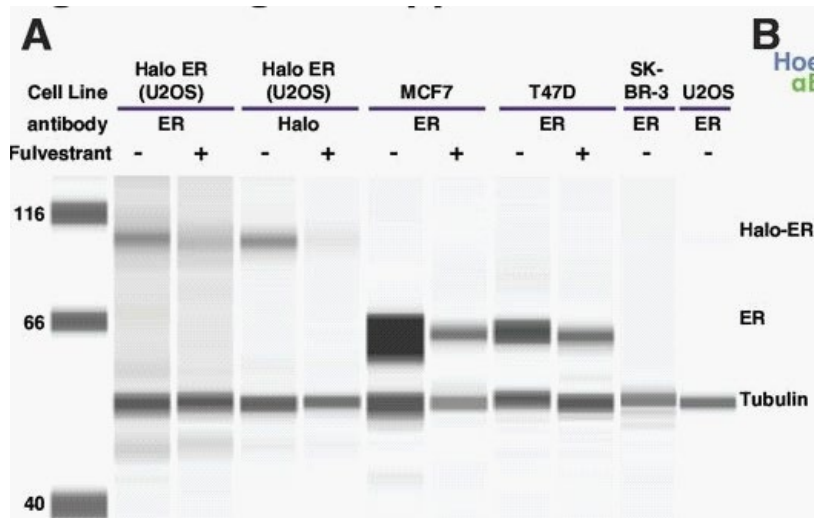


Figure 5A: GDC-0927 structural variants characterized by estrogen receptorER degradation or cell proliferation assays.(A) Western blot of the ER-expressing breast cancer cell lines MCF7 and T47d compared to ER expression in ER-null lines SK-BR-3 or U2OS. Samples were treated with fulvestrant for 24 hr prior to lysis. Fulvestrant treatment leads to the degradation of ER, even when fused to HaloTag. (B) Example of GDC-0927-induced degradation of ER in different cell lines measured by immunofluorescence against ER. Cells were exposed to compound for 24 hr prior to fixation. Image pixel intensities are equivalently scaled. (C) Example compound dose titrations showing change in mean nuclear inten... See reference below for more information.

Image collected and cropped by CiteAb from: [Elife. 2025 Jan 9;12:RP93183.](#)

Under copyright license: CC-BY

Antibody

Name	α-Tubulin Mouse Monoclonal Antibody
Target Antigen	α-Tubulin
Reactant	Homo Sapiens (Human)
Antibody Type	Primary
Host	Mouse
Clonality	Monoclonal
Alternate Identifier	RRID: AB_2637092

Assay

Sample Type	MCF-7,SK-BR-3,T-47D,U2OS
Antibody Dilution	1:100
Separation Type	Size
Observed kDa	Not stated
Publications (1 found)	Elife. 2025 Jan 9;12:RP93183.

For additional information on this antibody [view antibody link](#).

This antibody is cited for use with Simple Western™ technology. To learn about Simple Western technology, available antibodies, or to submit new antibodies, visit the links below. For additional information, please contact: support@proteinsimple.com

[Simple Western Systems](#)

[Simple Western Antibody Database](#)

[Submit Antibody Validation Data](#)

For research use or manufacturing purposes only. Trademarks and registered trademarks are the property of their respective owners.