

## SIMPLE WESTERN CERTIFIED ANTIBODY DATASHEET

[View Antibody Link](#)

1



Figure 1: Kappa Light Chain Antibody (KLC709) [NBP2-34259] - Simple Western lane view shows a specific band for Kappa Light Chain in 0.2 mg/ml of H. Plasma lysate(s). This experiment was performed under reducing conditions using the 12-230 kDa separation system.

2

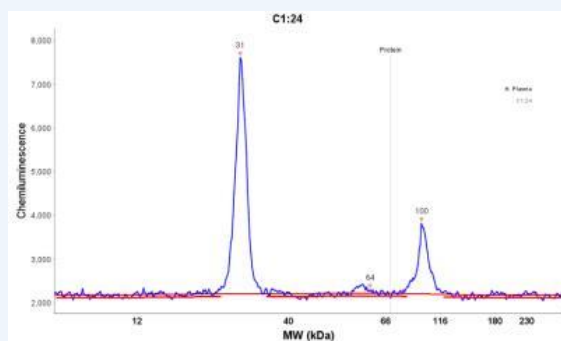


Figure 2: Kappa Light Chain Antibody (KLC709) [NBP2-34259] - Electropherogram image of the corresponding Simple Western lane. Kappa Light Chain antibody was used at 10 ug/ml dilution of H. Plasma lysates(s) respectively.

PROTEIN TARGET/ANTIBODY	
Protein Target	Kappa Light Chain
Protein Isoform	Kappa Light Chain
Antibody Type	Primary
Host Species/Clonality	Mouse Monoclonal
ASSAY	
Sample Type	H. Plasma lysate(s)
Sample Concentration	0.2 mg/ml
Antibody Concentration	10 &micro;g/mL
Antibody Diluent	
Detection Mode	Chemiluminescence
Separation Type	Size
Matrix	12 - 230 kDa
Observed kDa	31

PUBLICATIONS
None Listed

This antibody is validated for Gel-Free, Blot Free, Hands Free Simple Western Systems. To learn about Simple Western Systems, available Simple Western antibodies, or new antibody submissions visit the links below. For additional information, please contact [support@proteinsimple.com](mailto:support@proteinsimple.com).

[Simple Western Systems](#)

[Simple Western Antibody Database](#)

[Simple Western Antibody Submission](#)