

SIMPLE WESTERN CERTIFIED ANTIBODY DATASHEET

[View Antibody Link](#)

1



Figure 1: Kappa Light Chain Antibody (L1C1) [NBP2-15191] - Simple Western lane view shows a specific band for Kappa Light Chain in 0.2 mg/ml of h serum, h tonsil lysate. This experiment was performed under reducing conditions using the 12-230 kDa separation system.

2

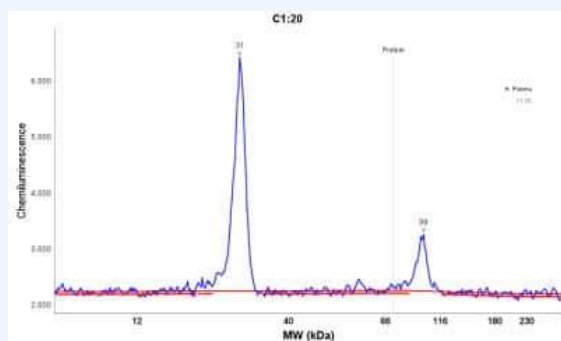


Figure 2: Kappa Light Chain Antibody (L1C1) [NBP2-15191] - Electropherogram image of the corresponding Simple western lane view. Kappa Light Chain antibody was used at 10 ug/ml dilution on h serum, h tonsil lysate(s) respectively.

PROTEIN TARGET/ANTIBODY	
Protein Target	Kappa Light Chain
Protein Isoform	Kappa Light Chain
Antibody Type	Primary
Host Species/Clonality	Mouse Monoclonal
ASSAY	
Sample Type	h serum, h tonsil lysates
Sample Concentration	0.2 mg/ml
Antibody Concentration	10 µg/mL
Antibody Diluent	
Detection Mode	Chemiluminescence
Separation Type	Size
Matrix	12 - 230 kDa
Observed kDa	31

PUBLICATIONS
None Listed

This antibody is validated for Gel-Free, Blot Free, Hands Free Simple Western Systems. To learn about Simple Western Systems, available Simple Western antibodies, or new antibody submissions visit the links below. For additional information, please contact support@proteinsimple.com.

[Simple Western Systems](#)

[Simple Western Antibody Database](#)

[Simple Western Antibody Submission](#)