

Vendor: Invitrogen Antibodies

Catalog #: PA5-20045

[View Antibody Link](#)

Simple Western Certified Antibody Datasheet

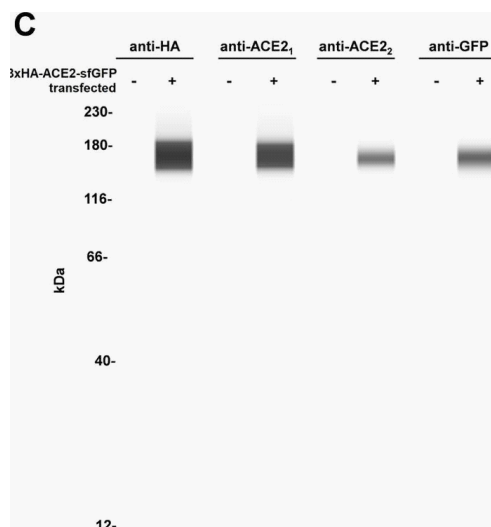


Figure 1C: Design for a membrane-localized ACE2 expression system. (A) Our ACE2 construct is driven by a CMV promoter followed by the first 25 residues of ACE2 containing the leader sequence that direct ACE2 to the plasma membrane. This is followed by a 3xHA tag linked to the remainder of ACE2 (20–805) and a C-terminal sfGFP. Both 3xHA and sfGFP fusions are separated from ACE2 by flexible 3xGGGGS linkers. (B) The ACE2 fusion protein is designed to be embedded in the plasma membrane where it can perform extracellular carboxypeptidase-mediated metabolism and its levels can be detected by cell staining with antibodies to HA. (C) Lysates from untransfected or 3xHA-ACE2-sfGFP-transfected HEK293 cells were analyzed by automated Jess capillary immunoassay using antibodies to HA, GFP, and two ACE2... See reference below for more information.

Image collected and cropped by CiteAb from: [Sci Rep. 2023 Aug 29;13\(1\):14123.](#)

Under copyright license: CC-BY

Antibody

Name	ACE2 Polyclonal Antibody
Target Antigen	ACE2
Reactant	Homo Sapiens (Human)
Antibody Type	Primary
Host	Rabbit
Clonality	Polyclonal
Alternate Identifier	RRID: AB_11154258

Assay

Sample Type	HEK293
Antibody Dilution	1:35
Separation Type	Size
Observed kDa	160
Publications (1 found)	Sci Rep. 2023 Aug 29;13(1):14123.

For additional information on this antibody [view antibody link](#).

This antibody is certified for Simple Western™ technology. To learn about Simple Western technology, available antibodies, or to submit new antibodies, visit the links below. For additional information, please contact: support@proteinsimple.com

[Simple Western Systems](#)

[Simple Western Antibody Database](#)

[Submit Antibody Validation Data](#)

biotechne // Global Developer, Manufacturer, and Supplier of High-Quality Reagents, Analytical Instruments, and Precision Diagnostics.

INCLUDES R&D Systems™ Novus Biologicals™ Tocris Bioscience™ ProteinSimple™ ACD™ ExosomeDx™ Asuragen® Lunaphore™

For research use or manufacturing purposes only. Trademarks and registered trademarks are the property of their respective owners.