

Vendor: Invitrogen Antibodies

Catalog #: MA1-26624

[View Antibody Link](#)

Simple Western Antibody Datasheet

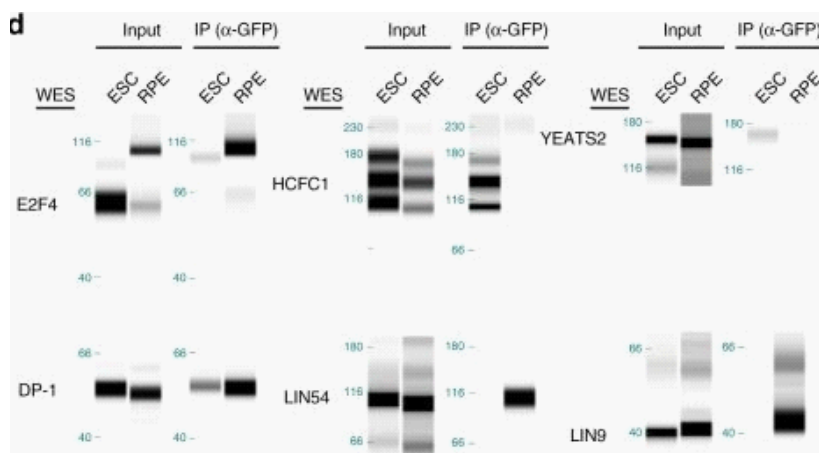


Figure 7D: Transcriptional activation by E2F4 in mouse ES cells is mediated by chromatin modifiers. a Schematic representation of the affinity purification-mass spectrometry approach to identify the E2F4 interactome. b Silver stain of eluted fractions from RPE cells and mouse ES cells. Slices of gel were subjected to mass spectrometry, and the indicated protein bands were identified by analyzing the proteins enriched in each slice. c GO terms for cellular components enriched in the list of mouse ES cell-specific candidate interactors. d Validation of interactions between GFP-E2F4 and DP-1, HCFC1, YEATS2, LIN54, and LIN9, by co-immunoprecipitation followed by immunoassay, in mouse ES cells and human RPE cells. Transcriptional activators (HCFC1 and YEATS2) preferentially bind to E2F4 in mouse ES cells. See reference below for more information.

Image collected and cropped by CiteAb from: [Nat Commun. 2019 Jul 3;10\(1\):2939.](#)

Under copyright license: CC BY

Antibody

Name	Transcription Factor E2F4 Antibody (4E2F04)
Target Antigen	Transcription Factor E2F4
Reactant	Human
Antibody Type	Primary
Host	Mouse
Clonality	Monoclonal
Alternate Identifier	RRID: AB_780368

Assay

Sample Type	
Antibody Dilution	
Separation Type	Size
Observed kDa	
Publications (1 found)	Nat Commun. 2019 Jul 3;10(1):2939.

For additional information on this antibody [view antibody link](#).

This antibody is cited for use with Simple Western™ technology. To learn about Simple Western technology, available antibodies, or to submit new antibodies, visit the links below. For additional information, please contact:

support@proteinsimple.com

[Simple Western Systems](#)

[Simple Western Antibody Database](#)

[Submit Antibody Validation Data](#)

For research use or manufacturing purposes only. Trademarks and registered trademarks are the property of their respective owners.