

SIMPLE WESTERN CERTIFIED ANTIBODY DATASHEET

[View
Antibody Link](#)

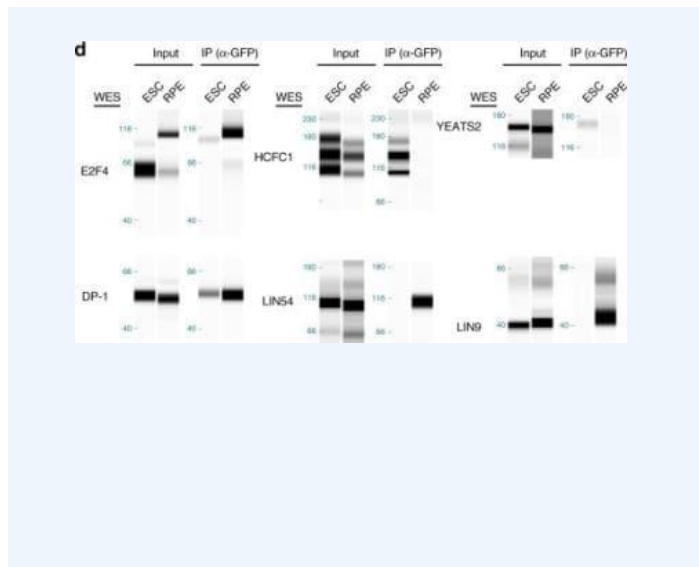


Figure1 Host Cell Factor 1/HCFC1 Antibody [NB100-68210] - Transcriptional activation by E2F4 in mouse ES cells is mediated by chromatin modifiers. Validation of interactions between GFP-E2F4 and DP-1, Host Cell Factor 1/HCFC1, YEATS2, LIN54, and LIN9, by co-immunoprecipitation followed by immunoassay, in mouse ES cells and human RPE cells. Transcriptional activators (Host Cell Factor 1/HCFC1 and YEATS2) preferentially bind to E2F4 in mouse ES cells while members of the DREAM repressor complex (LIN54 and LIN9) bind preferentially to E2F4 in RPE cells. Molecular weights (kDa) are indicated on the left side (one experiment shown of at least two experiments) Image collected and cropped by CiteAb from the following publication (<http://www.nature.com/articles/s41467-019-10901-x>), licensed under a CC-BY licence.

PROTEIN TARGET/ANTIBODY	
Protein Target	Host Cell Factor 1/HCFC1
Protein Isoform	Host Cell Factor 1/HCFC1 Antibody
Antibody Type	Primary
Host Species/Clonality	Rabbit Polyclonal
ASSAY	
Sample Type	Mouse ES cells and Human RPE cells
Sample Concentration	
Antibody Concentration/Dilution	
Antibody Diluent	
Detection Mode	Chemiluminescence
Separation Type	Size
Matrix	12-230 kDa
Observed kDa	
Publications	None listed

This antibody is validated for Gel-Free, Blot Free, Hands Free Simple Western Systems. To learn about Simple Western Systems, available Simple Western antibodies, or new antibody submissions visit the links below. For additional information, please contact support@proteinsimple.com.

[Simple Western Systems](#)

[Simple Western Antibody Database](#)

[Simple Western Antibody Submission](#)