

## SIMPLE WESTERN VALIDATED ANTIBODY DATASHEET

[View  
Antibody Link](#)

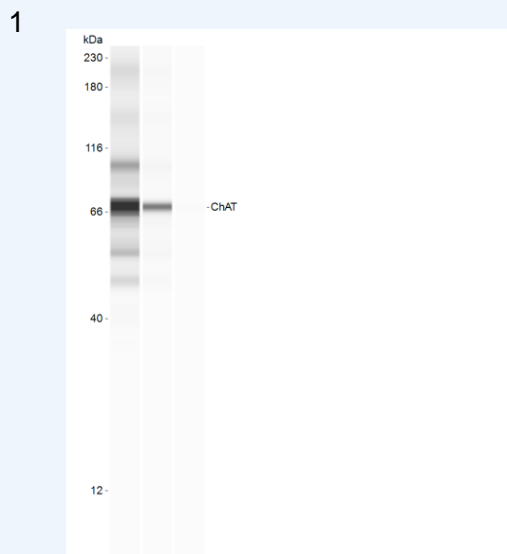


Figure 1: Simple Western Lane view shows Choline acetyltransferase (ChAT) antibody at 1:10, 1:50, 1:250 dilution in Mouse brain tissue at 2.0 mg/mL using 12 - 230 kDa separation system . Customer submitted data.

2A

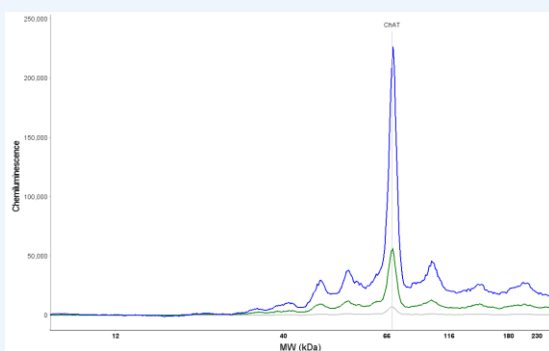


Figure 2A: Simple Western Electropherogram of Choline acetyltransferase (ChAT) antibody was used at 1:10, 1:50, 1:250 dilution in Mouse brain tissue at 2.0 mg/mL. Customer submitted data.

2B

ANTIBODY CONCENTRATION	PEAK AREAS	BASELINE VALUES
1. 1:10	2151857.10	10036.40
2. 1:50	570520.60	1695.50
3. 1:250	71114.90	344.90

Figure 2B: Table range of antibody concentrations tested and peak areas and baseline values. Customer submitted data.

PROTEIN TARGET/ANTIBODY	
Protein Target	Choline acetyltransferase (ChAT)
Protein Isoform	
Antibody Type	Primary
Host Species/Clonality	Goat Monoclonal
ASSAY	
Sample Type	Mouse brain tissue
Sample Concentration	0.08 mg/ mL, 0.4 mg/ mL, 2.0 mg/ mL,
Antibody Concentration	×10, ×50, ×250
Antibody Diluent	
Detection Mode	Chemiluminescent
Separation Type	Size
Matrix	12 - 230 kDa
Observed kDa	70

PUBLICATIONS

This antibody is validated for Gel-Free, Blot Free, Hands Free Simple Western Systems. To learn about Simple Western Systems, available Simple Western antibodies, or new antibody submissions visit the links below. For additional information, please contact [support@proteinsimple.com](mailto:support@proteinsimple.com).

[Simple Western Systems](#)

[Simple Western Antibody Database](#)

[Simple Western Antibody Submission](#)