

SIMPLE WESTERN CERTIFIED ANTIBODY DATASHEET

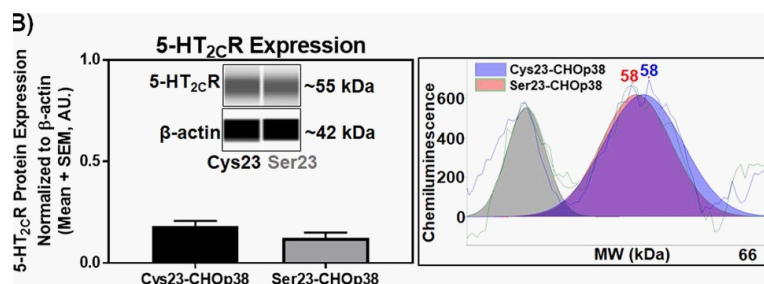


Figure 2B: Total 5-HT_{2c}R protein levels do not differ between the Cys23- and Ser23-CHOp38 cell lines. (A) Representative saturation binding isotherm of stably transfected Cys23 and Ser23 5-HT_{2c}R-CHOp38 cells. Results obtained for KD and Bmax values were from 3 independent experiments. Total homogenate (B) 5-HT_{2c}R (n.s.; n = 7), (C) TfR (n.s.; n = 3) and (D) p38 (n.s.; n = 6) protein expression normalized to β-actin in stably expressing Cys23 and Ser23 5-HT_{2c}R-CHOp38 cells. Representative virtual blot-like images (left) and electropherograms adjusted to baseline (right) were generated by the Simple Western Compass software using the area under the curve for the peak of interest. Full length electropherograms and virtual blot-like images are located in Supplementary Figure 2.

See reference below for more information.

Image collected and cropped by CiteAb from:
Under copyright license:

Sci Rep. 2019 Nov 13;9(1):16737.
CC BY

Target/Antibody

Antibody Target/Name	Actin, cytoplasmic 1
Isoform	Unmodified
Reactant	Homo sapiens (Human)
Antibody Type	Primary
Host Species/Clonality	Rabbit Monoclonal

Assay

Sample Type	Blood
Antibody Dilution/Concentration	1:50
Detection Mode	Chemiluminescence
Separation Type	SW - Size
Matrix	Not stated
Observed kDa or pI	Not stated
Publications [3 total]	[1] Nat Commun. 2019 Nov 19;10(1):5222. [2] Nat Commun. 2020 Dec 8;11(1):6275. [3] Sci Rep. 2019 Nov 13;9(1):16737.

For additional information on this antibody: [View Antibody Link](#)

This antibody is certified for Gel-Free, Blot Free, Hands Free Simple Western Systems. To learn about Simple Western Systems, available Simple Western antibodies, or new antibody submissions visit the links below. For additional information, please contact support@proteinsimple.com

[Simple Western Systems](#)

[Simple Western Antibody Database](#)

[Simple Western Antibody Submission](#)