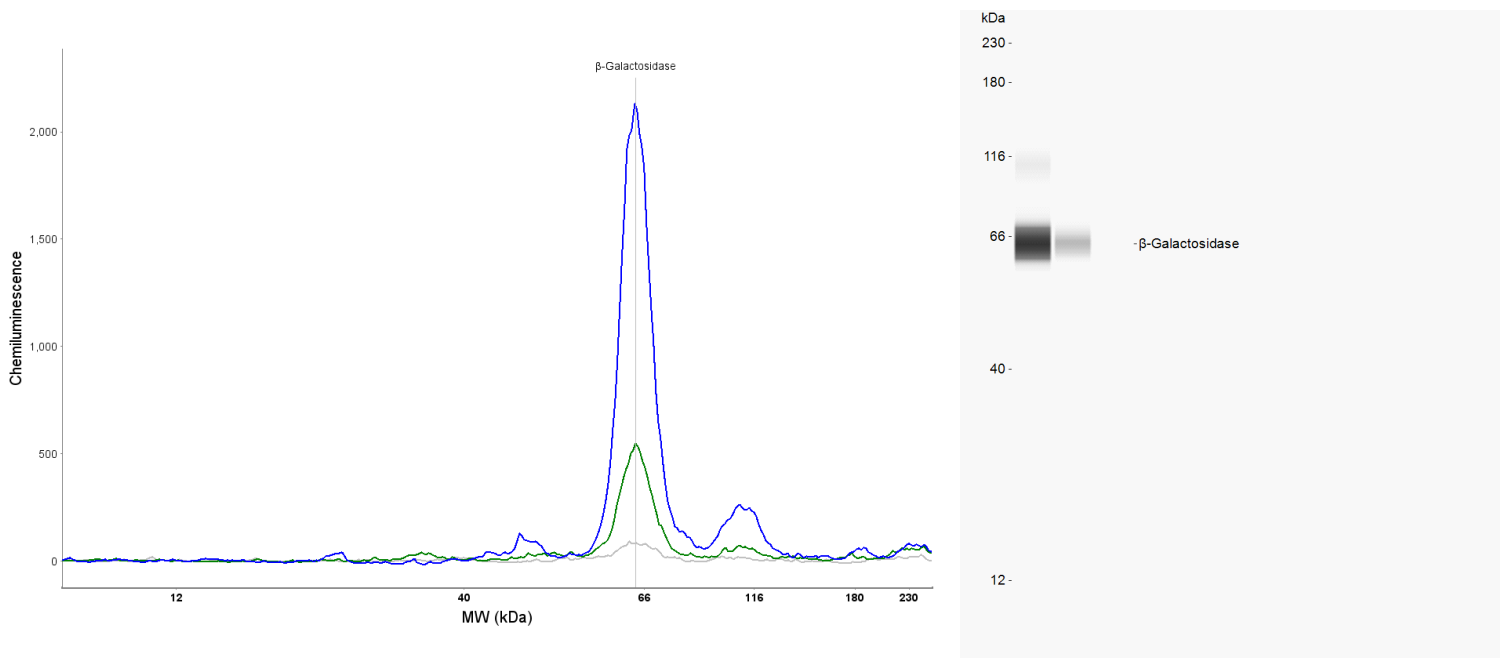


## SIMPLE WESTERN CERTIFIED ANTIBODY DATASHEET



### Antibody

Antibody Name (Target)	β-Galactosidase (E2U2I)
Host Species	Rabbit
Clonality	Monoclonal
Antibody Type	Primary

### Assay

Assay Type	Size
Detection	Chemiluminescence
Matrix	12 - 230 kDa
Observed kDa	66
Antibody Concentration/Dilution	1:25, 1:100, 1:400
Sample Concentration/Dilution	0.25 mg/mL
Sample Type	769P H2O2 treated for 72hr, whole Lysates, 95 °C, 5 minutes

For additional information on this antibody: [View Antibody Link](#)

This antibody is certified for Gel-Free, Blot Free, Hands Free Simple Western Systems. To learn about Simple Western Systems, available Simple Western antibodies, or new antibody submissions visit the links below. For additional information, please contact [support@proteinsimple.com](mailto:support@proteinsimple.com)

[Simple Western Systems](#)

[Simple Western Antibody Database](#)

[Simple Western Antibody Submission](#)