

## SIMPLE WESTERN CERTIFIED ANTIBODY DATASHEET

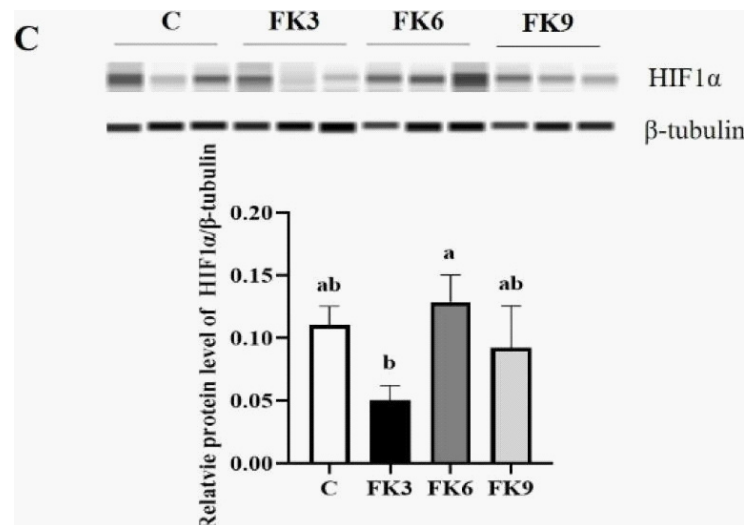


Figure 2C: The effects of dietary various FK levels replacement on histology and antioxidant responses of distal intestine of largemouth bass. (A) The phenotypes of distal intestinal histopathological examination by H&E and Alcian blue staining (n = 12); (B) The mRNA levels of Keap1 and Nrf2 (n = 12). (C) The relative protein level of HIF1α (n = 3). Different superscript letters "a" or "b" indicate significant differences (p < 0.05), whereas the same superscript letters show no significant differences among groups (means ± SEM).

See reference below for more information.

Image collected and cropped by CiteAb from:  
Under copyright license:

Antioxidants (Basel). 2022 Jul 28;11(8):1479.  
CC-BY

### Target/Antibody

|                        |                            |
|------------------------|----------------------------|
| Antibody Target/Name   | Tubulin beta chain         |
| Isoform                |                            |
| Reactant               | Mus musculus (House mouse) |
| Antibody Type          | Primary                    |
| Host Species/Clonality | Rabbit Polyclonal          |

### Assay

|                                 |   |
|---------------------------------|---|
| Sample Type                     | Small intestine                                   |
| Antibody Dilution/Concentration | Not_ Stated                                       |
| Detection Mode                  | Chemiluminescence                                 |
| Separation Type                 | SW - Size   |
| Matrix                          | 12-230 kDa  |
| Observed kDa or pI              | Not_ Stated                                       |
| Publications [1 total]          | [1] Antioxidants (Basel). 2022 Jul 28;11(8):1479. |

For additional information on this antibody: [View Antibody Link](#)

This antibody is certified for Gel-Free, Blot Free, Hands Free Simple Western Systems. To learn about Simple Western Systems, available Simple Western antibodies, or new antibody submissions visit the links below. For additional information, please contact

[support@proteinsimple.com](mailto:support@proteinsimple.com)

[Simple Western Systems](#)

[Simple Western Antibody Database](#)

[Simple Western Antibody Submission](#)