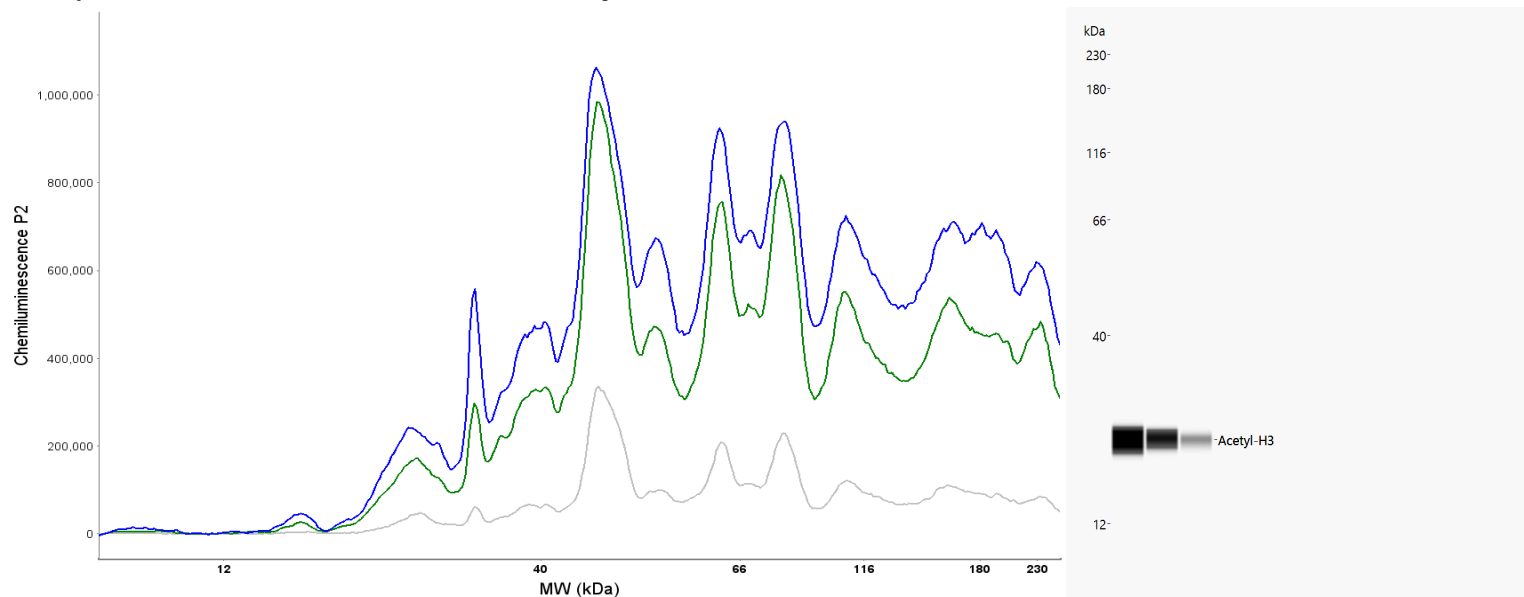


Simple Western Certified Antibody Datasheet



Antibody

Target	Acetylated-Lysine
Host	Mouse
Clonality	Monoclonal
Type	Primary

Assay

Assay Type	Size, RePlex
Antibody Dilution	1:20, 1:50, 1:200
Detection	Chemiluminescence
Matrix	12–230 kDa
Observed kDa	0
Sample Concentration	0.6 mg/ml
Sample Type / Prep.	Mouse heart / 95 °C, 5 minutes, reducing

For additional information on this antibody [view antibody link](#).

This antibody is certified for Simple Western™ technology. To learn about Simple Western technology, available antibodies, or to submit new antibodies, visit the links below. For additional information, please contact:

support@proteinsimple.com

[Simple Western Systems](#)

[Simple Western Antibody Database](#)

[Submit Antibody Validation Data](#)