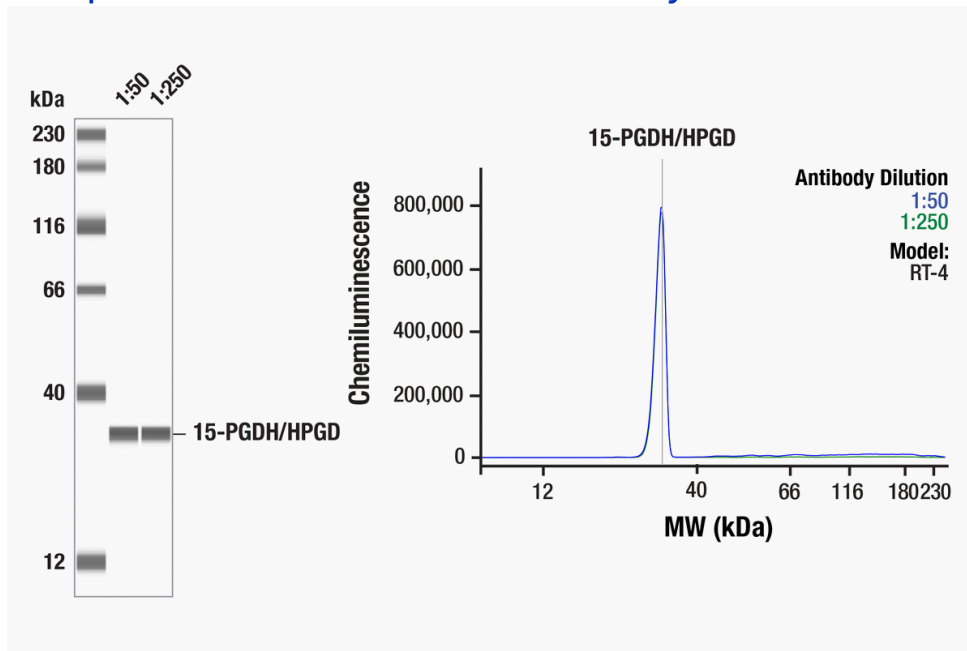


Simple Western Certified Antibody Datasheet



Simple Western™ analysis of lysates (1.0 mg/mL) from RT-4 cells using 15-PGDH/HPGD (E9H7W) Rabbit mAb #94019. The virtual lane view (left) shows the target band (as indicated) at 1:50 and 1:250 dilutions of primary antibody. The corresponding electropherogram view (right) plots chemiluminescence by molecular weight along the capillary at 1:50 (blue line) and 1:250 (green line) dilutions of primary antibody. This experiment was performed under reducing conditions on the Jess™ Simple Western instrument from ProteinSimple, a Bio-Techne brand, using the 12–230 kDa Separation Module.

Certified by Cell Signaling Technology

Antibody

Name	15-PGDH/HPGD (E9H7W) Rabbit mAb #94019
Host	Rabbit
Clonality	Monoclonal
Type	Primary
Dilution	1:50–1:250 (recommended by CST)
Sample Concentration	1.0 mg/mL (recommended by CST)

Assay

Type	Size
Matrix	12–230 kDa
Observed kDa	33
Sample Type	RT-4

For additional information on this antibody [view antibody link](#).

This antibody is certified for Simple Western™ technology. To learn about Simple Western technology, available antibodies, or to submit new antibodies, visit the links below. For additional information, please contact:

support@proteinsimple.com

[Simple Western Systems](#)

[Simple Western Antibody Database](#)

[Submit Antibody Validation Data](#)