

Vendor: Cell Signaling Technology

Catalog #: 5335

[View Antibody Link](#)

Simple Western Certified Antibody Datasheet

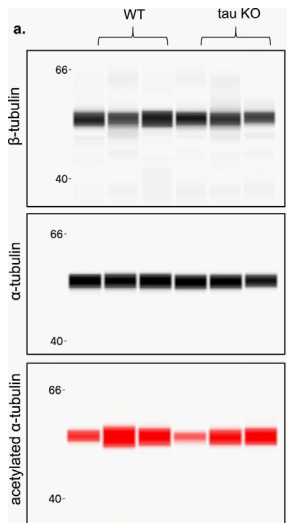


Figure 5A: Artificial immunoblots generated from capillary electrophoresis (Jess™) using 1.2 μ g protein lysate from total tubulin extracts. a Lysates were immunoprobed for α -tubulin, β -tubulin and acetylated α -tubulin and normalized to b total protein., c–e Normalized protein levels were plotted and statistically analyzed (n = 3/group); p values from unpaired t tests are indicated on the blots... See reference below for more information.

Image collected and cropped by CiteAb from: [EJNMMI Res. 2022 Jul 26;12\(1\):41.](#)

Under copyright license: CC-BY

Antibody

Name	Acetyl-alpha-Tubulin (Lys40) (D20G3) XP [®] Rabbit mAb
Target Antigen	Acetyl- α -Tubulin (Lys40) (D20G3)
Reactant	Mus Musculus (House Mouse)
Antibody Type	Primary
Host	Rabbit
Clonality	Monoclonal
Alternate Identifier	RRID: AB_10544694

Assay

Sample Type	Brain
Antibody Dilution	1:50
Separation Type	Size
Observed kDa	
Publications (3 found)	Eur J Med Chem. 2024 Jun 5;272:116447. // J Peripher Nerv Syst. 2024 Jun;29(2):213-220. // EJNMMI Res. 2022 Jul 26;12(1):41.

For additional information on this antibody [view antibody link](#).

This antibody is certified for Simple Western™ technology. To learn about Simple Western technology, available antibodies, or to submit new antibodies, visit the links below. For additional information, please contact: support@proteinsimple.com

[Simple Western Systems](#)

[Simple Western Antibody Database](#)

[Submit Antibody Validation Data](#)

biotechne // Global Developer, Manufacturer, and Supplier of High-Quality Reagents, Analytical Instruments, and Precision Diagnostics.

INCLUDES R&D Systems™ Novus Biologicals™ Tocris Bioscience™ ProteinSimple™ ACD™ ExosomeDx™ Asuragen® Lunaphore™

For research use or manufacturing purposes only. Trademarks and registered trademarks are the property of their respective owners.