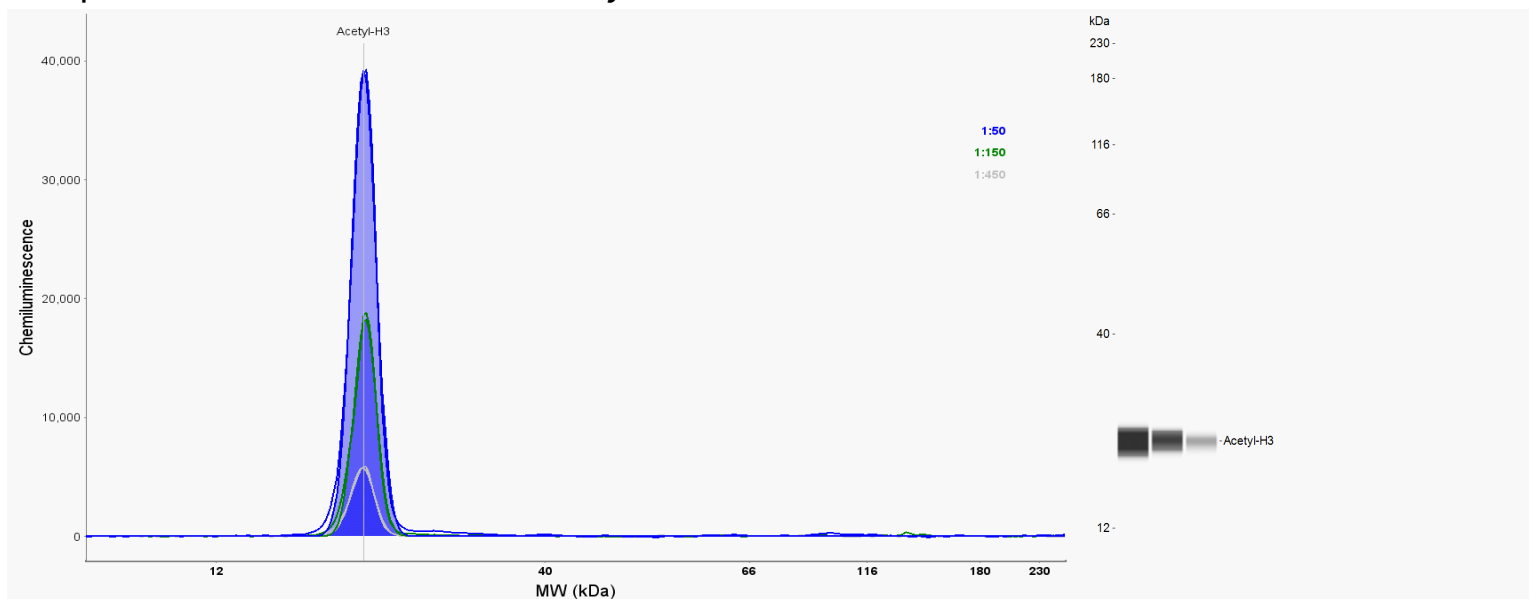


Simple Western Certified Antibody Datasheet



Antibody

Target	Acetyl-Histone H3 (Lys27)
Host	Rabbit
Clonality	Polyclonal
Type	Primary

Assay

Assay Type	Size
Antibody Dilution	1:50, 1:150, 1:450
Detection	Chemiluminescence
Matrix	12–230 kDa
Observed kDa	25
Sample Concentration	0.3 mg/mL
Sample Type / Prep.	Histone extraction of OCI-LY3 cells untreated and treated with 10 nM Panobinostat / 95 °C, 5 minutes, reducing (+DTT)

For additional information on this antibody [view antibody link](#).

This antibody is certified for Simple Western™ technology. To learn about Simple Western technology, available antibodies, or to submit new antibodies, visit the links below. For additional information, please contact:

support@proteinsimple.com

[Simple Western Systems](#)

[Simple Western Antibody Database](#)

[Submit Antibody Validation Data](#)