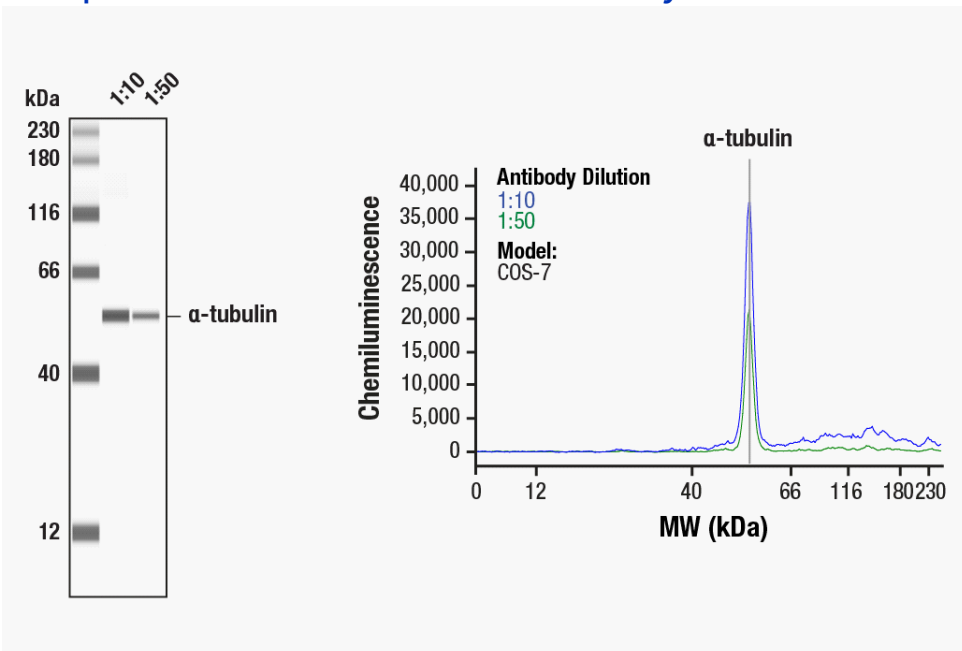


Vendor: Cell Signaling Technology
Catalog #: 3873
[View Antibody Link](#)

Simple Western Certified Antibody Datasheet



Simple Western™ analysis of lysates (0.1 mg/mL) from COS-7 cells using α-Tubulin (DM1A) Mouse mAb #3873. The virtual lane view (left) shows the target band (as indicated) at 1:10 and 1:50 dilutions of primary antibody. The corresponding electropherogram view (right) plots chemiluminescence by molecular weight along the capillary at 1:10 (blue line) and 1:50 (green line) dilutions of primary antibody. This experiment was performed under reducing conditions on the Jess™ Simple Western instrument from ProteinSimple, a Bio-Techne brand, using the 12–230 kDa Separation Module.

Certified by Cell Signaling Technology

Antibody

Name	α-Tubulin (DM1A) Mouse mAb
Host	Mouse
Clonality	Monoclonal
Type	Primary
Dilution	1:10–1:50 (recommended by CST)
Sample Concentration	0.1 mg/mL (recommended by CST)

Assay

Type	Size
Matrix	12–230 kDa
Observed kDa	55
Sample Type	COS-7
Publications (2 found)	PLoS One. 2016 May 19;11(5):e0155875. // EJNMMI Res. 2022 Jul 26;12(1):41.

For additional information on this antibody [view antibody link](#).

This antibody is certified for Simple Western™ technology. To learn about Simple Western technology, available antibodies, or to submit new antibodies, visit the links below. For additional information, please contact:

support@proteinsimple.com

[Simple Western Systems](#)

[Simple Western Antibody Database](#)

[Submit Antibody Validation Data](#)