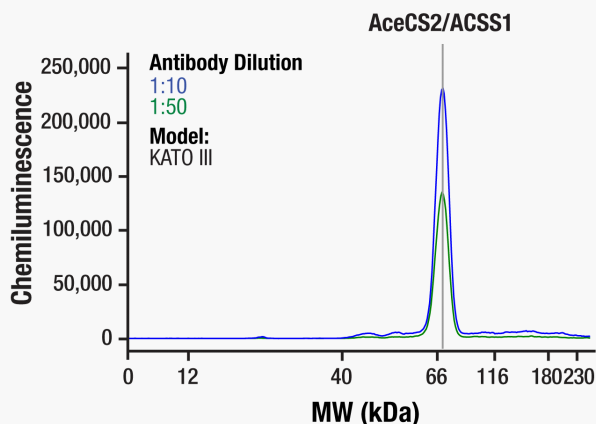
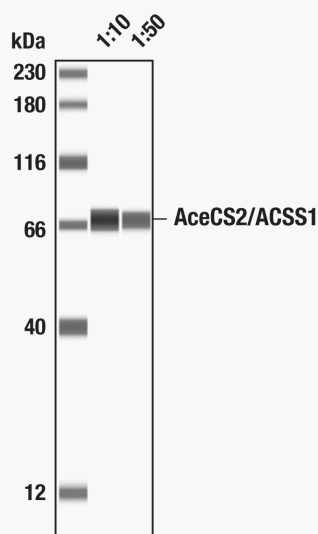


## Simple Western Certified Antibody Datasheet



Simple Western™ analysis of lysates (1 mg/mL) from KATO III cells using AceCS2/ACSS1 (E6T5E) Rabbit mAb #37041. The virtual lane view (left) shows the target band (as indicated) at 1:10 and 1:50 dilutions of primary antibody. The corresponding electropherogram view (right) plots chemiluminescence by molecular weight along the capillary at 1:10 (blue line) and 1:50 (green line) dilutions of primary antibody. This experiment was performed under reducing conditions on the Jess™ Simple Western instrument from ProteinSimple, a Bio-Techne brand, using the 12–230 kDa Separation Module.

Certified by Cell Signaling Technology

### Antibody

Name	AceCS2/ACSS1 (E6T5E) Rabbit mAb
Host	Rabbit
Clonality	Monoclonal
Type	Primary
Dilution	1:10–1:50 (recommended by CST)
Sample Concentration	1.0 mg/mL (recommended by CST)

### Assay

Type	Size
Matrix	12–230 kDa
Observed kDa	70
Sample Type	KATO III

For additional information on this antibody [view antibody link](#).

This antibody is certified for Simple Western™ technology. To learn about Simple Western technology, available antibodies, or to submit new antibodies, visit the links below. For additional information, please contact:

[support@proteinsimple.com](mailto:support@proteinsimple.com)

[Simple Western Systems](#)

[Simple Western Antibody Database](#)

[Submit Antibody Validation Data](#)