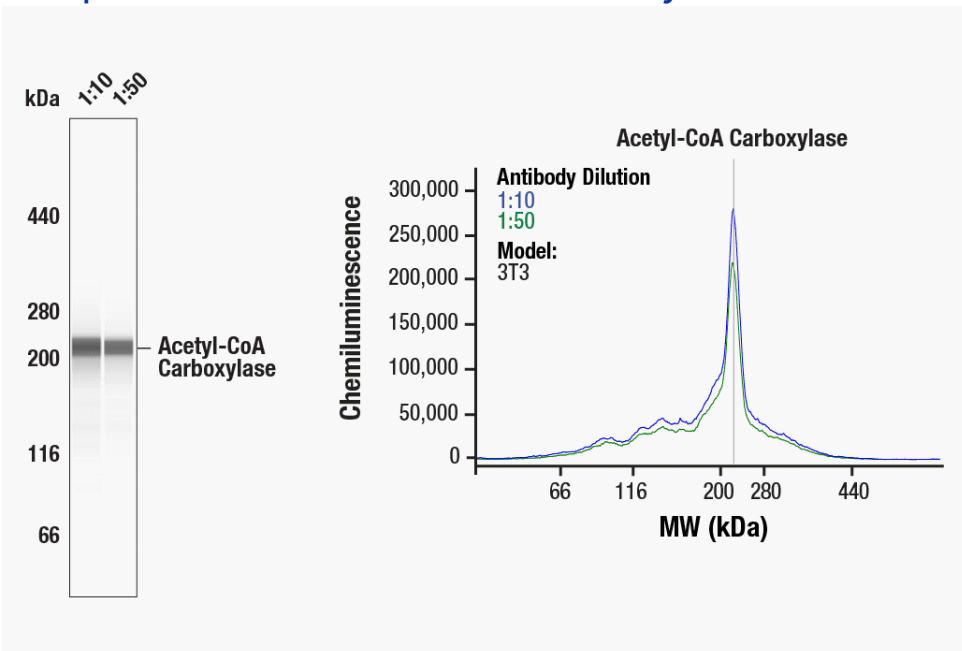


Simple Western Certified Antibody Datasheet



Simple Western™ analysis of lysates (1 mg/mL) from 3T3 cells using Acetyl-CoA Carboxylase (C83B10) Rabbit mAb #3676. The virtual lane view (left) shows the target band (as indicated) at 1:10 and 1:50 dilutions of primary antibody. The corresponding electropherogram view (right) plots chemiluminescence by molecular weight along the capillary at 1:10 (blue line) and 1:50 (green line) dilutions of primary antibody. This experiment was performed under reducing conditions on the Jess™ Simple Western instrument from ProteinSimple, a Bio-Techne brand, using the 66–440 kDa Separation Module.

Certified by Cell Signaling Technology

Antibody

Name	Acetyl-CoA Carboxylase (C83B10) Rabbit mAb
Host	Rabbit
Clonality	Monoclonal
Type	Primary
Dilution	1:10–1:50 (recommended by CST)
Sample Concentration	1 mg/mL (recommended by CST)

Assay

Type	Size
Matrix	66–440 kDa
Observed kDa	220
Sample Type	3T3
Publications (5 found)	J Dairy Sci. 2024 Feb;107(2):902-916. // Transl Cancer Res. 2022 Aug;11(8):2607-2621. // Int J Mol Sci. 2022 Jul 4;23(13):7444. // J Biol Chem. 2022 May;298(5):101852. // Carcinogenesis. 2017 Sep 1;38(9):920-928.

For additional information on this antibody [view antibody link](#).

This antibody is certified for Simple Western™ technology. To learn about Simple Western technology, available antibodies, or to submit new antibodies, visit the links below. For additional information, please contact:

support@proteinsimple.com

[Simple Western Systems](#)

[Simple Western Antibody Database](#)

[Submit Antibody Validation Data](#)