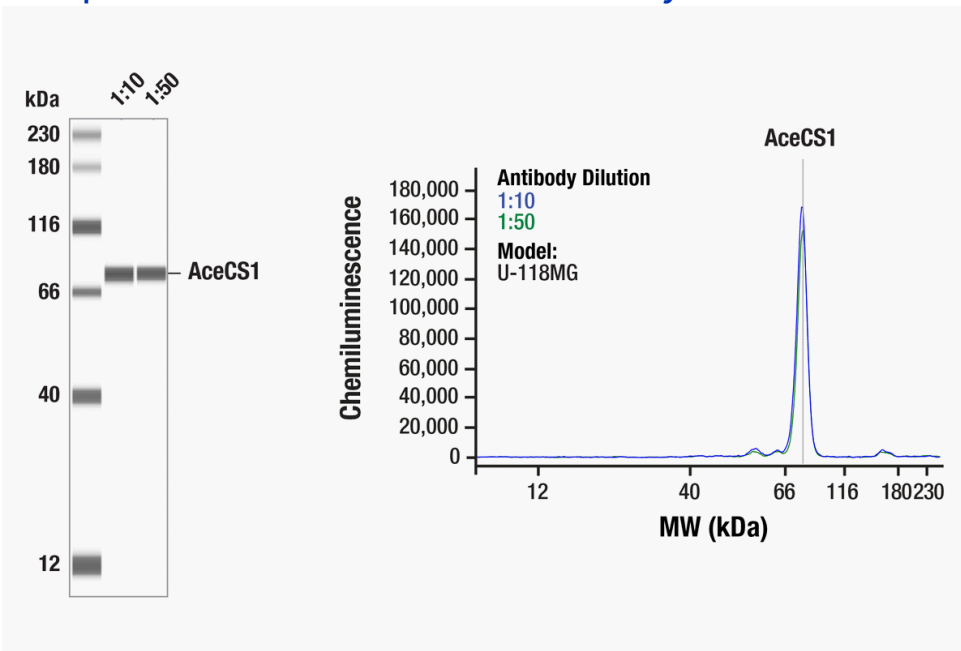


## Simple Western Certified Antibody Datasheet



Simple Western™ analysis of lysates (0.1 mg/mL) from U-118MG cells using AceCS1 (D19C6) Rabbit mAb #3658. The virtual lane view (left) shows the target band (as indicated) at 1:10 and 1:50 dilutions of primary antibody. The corresponding electropherogram view (right) plots chemiluminescence by molecular weight along the capillary at 1:10 (blue line) and 1:50 (green line) dilutions of primary antibody. This experiment was performed under reducing conditions on the Jess™ Simple Western instrument from ProteinSimple, a Bio-Techne brand, using the 12 – 230 kDa Separation Module.

Certified by Cell Signaling Technology

### Antibody

Name	AceCS1 (D19C6) Rabbit mAb #3658
Host	Rabbit
Clonality	Monoclonal
Type	Primary
Dilution	1:10–1:50 (recommended by CST)
Sample Concentration	0.1 mg/mL (recommended by CST)

### Assay

Type	Size
Matrix	12–230 kDa
Observed kDa	80
Sample Type	U-118MG
Publications (3 found)	Cancers (Basel). 2022 Aug 13;14(16):3913. // Int J Mol Sci. 2022 Jul 4;23(13):7444. // Cancers (Basel). 2020 Sep 3;12(9):2492.

For additional information on this antibody [view antibody link](#).

This antibody is certified for Simple Western™ technology. To learn about Simple Western technology, available antibodies, or to submit new antibodies, visit the links below. For additional information, please contact:

[support@proteinsimple.com](mailto:support@proteinsimple.com)

[Simple Western Systems](#)

[Simple Western Antibody Database](#)

[Submit Antibody Validation Data](#)