

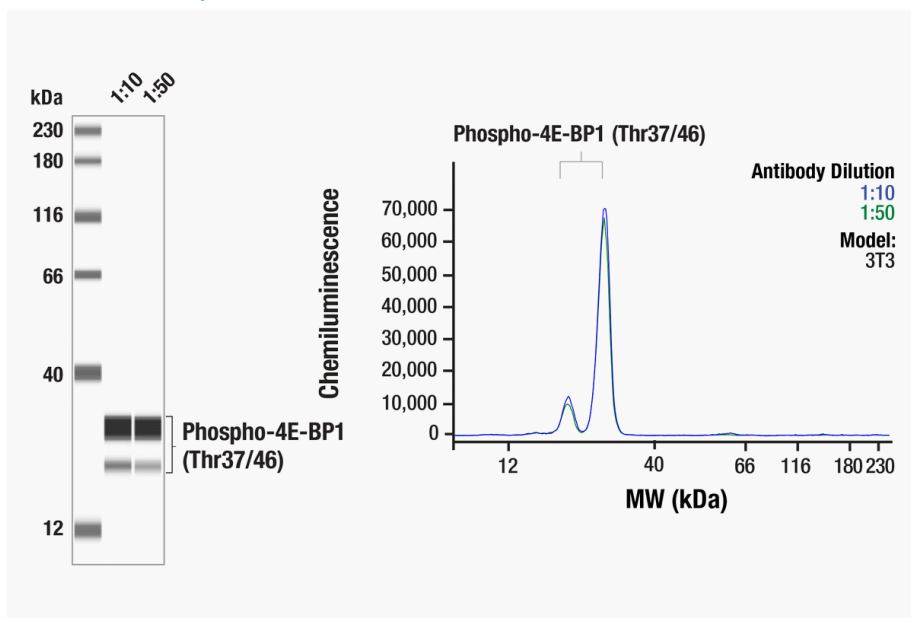
Simple Western Certified Antibody Datasheet

Phospho-4E-BP1

Vendor: Cell Signaling Technology

Catalog #: 2855

[View Antibody Link](#)



Simple Western™ analysis of lysates (0.1 mg/mL) from 3T3 cells using Phospho-4E-BP1 (Thr37/46) (236B4) Rabbit mAb #2855. The virtual lane view (left) shows the target band (as indicated) at 1:10 and 1:50 dilutions of primary antibody. The corresponding electropherogram view (right) plots chemiluminescence by molecular weight along the capillary at 1:10 (blue line) and 1:50 (green line) dilutions of primary antibody. This experiment was performed under reducing conditions on the Jess™ Simple Western instrument from R&D Systems, a Bio-Techne brand, using the 12–230 kDa Separation Module. Certified by Cell Signaling Technology

Antibody

Name:	Phospho-4E-BP1 (Thr37/46) (236B4) Rabbit mAb
Host:	Rabbit
Clonality:	Monoclonal
Type:	Primary
Dilution:	1:10–1:50 (recommended by CST)
Sample Concentration:	0.1 mg/mL (recommended by CST)

Assay

Type:	Size
Matrix:	12–230 kDa
Observed kDa:	23–30
Sample Type:	3T3

Publications (8)

Citation

Neoplasia. 2024 Nov;57:101045.

Cell Stem Cell. 2024 Mar 7;31(3):341-358.e7.

Int J Mol Sci. 2023 Nov 2;24(21):15918.

Nutrients. 2023 May 30;15(11):2569.

Int J Mol Sci. 2022 Jul 4;23(13):7444.

Nature. 2021 Apr;592(7856):794-798.

Sci Rep. 2018 Feb 26;8(1):3606.

J Cell Biol. 2017 Jun 5;216(6):1567-1577.

PMID

[39236400](#)

[38402618](#)

[37958901](#)

[37299532](#)

[35806452](#)

[33854239](#)

[29483581](#)

[28442534](#)

DOI

[10.1016/j.neo.2024.101045](#)

[10.1016/j.stem.2024.01.013](#)

[10.3390/ijms242115918](#)

[10.3390/nu15112569](#)

[10.3390/ijms23137444](#)

[10.1038/s41586-021-03474-7](#)

[10.1038/s41598-018-22082-6](#)

[10.1083/jcb.201610058](#)

For additional information on this antibody: [view antibody link](#).

This antibody is certified for Simple Western™ technology. Visit the links below to learn about Simple Western technology, find validated antibodies, or submit new antibody validation data. For more information, contact: instrument.support@bio-techne.com

[Simple Western Systems](#)

[Simple Western Antibody Database](#)

[Submit Antibody Validation Data](#)

R&Dsystems by **biotechne**

For Research Use or Manufacturing Purposes Only.

R&D Systems™ and Bio-Techne® are trademarks or registered trademarks of Bio-Techne Corporation and affiliated entities. All other trademarks, service marks, and trade names are the property of their respective owners. Any use of third-party names, logos, or marks does not imply affiliation, sponsorship, or endorsement. © 2026 Bio-Techne.