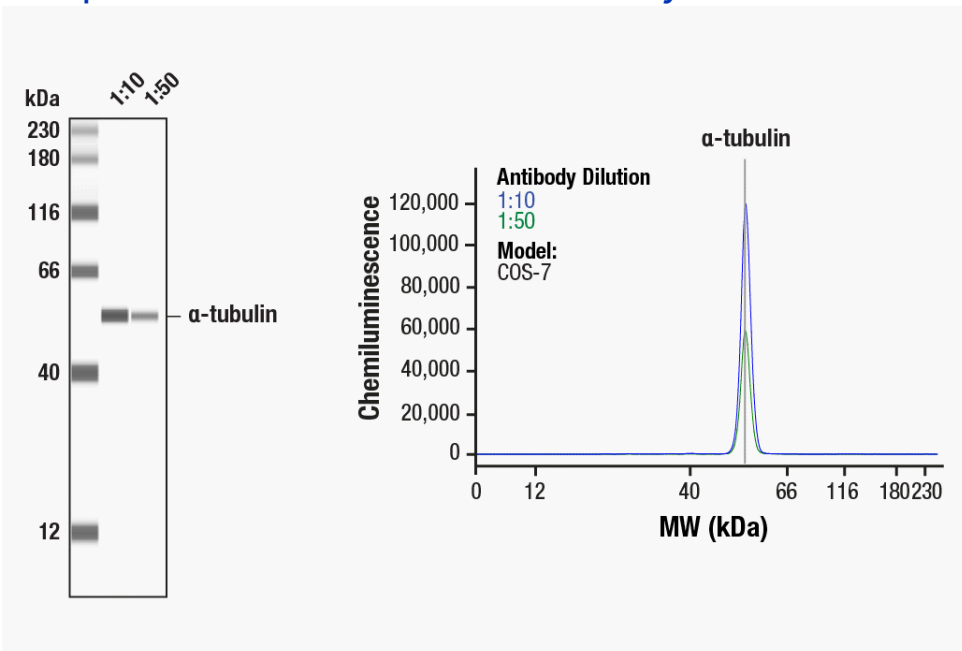


**Vendor: Cell Signaling Technology**  
**Catalog #: 2125**  
[View Antibody Link](#)

## Simple Western Certified Antibody Datasheet



Simple Western™ analysis of lysates (0.1 mg/mL) from COS-7 cells using α-Tubulin (11H10) Rabbit mAb #2125. The virtual lane view (left) shows the target band (as indicated) at 1:10 and 1:50 dilutions of primary antibody. The corresponding electropherogram view (right) plots chemiluminescence by molecular weight along the capillary at 1:10 (blue line) and 1:50 (green line) dilutions of primary antibody. This experiment was performed under reducing conditions on the Jess™ Simple Western instrument from ProteinSimple, a Bio-Techne brand, using the 12–230 kDa Separation Module.

Certified by Cell Signaling Technology

### Antibody

Name	α-Tubulin (11H10) Rabbit mAb
Host	Rabbit
Clonality	Monoclonal
Type	Primary
Dilution	1:10–1:50 (recommended by CST)
Sample Concentration	0.1 mg/mL (recommended by CST)

### Assay

Type	Size
Matrix	12–230 kDa
Observed kDa	55
Sample Type	COS-7
Publications (5 found)	J Cell Sci. 2018 Feb 2;131(3):jcs202580. // Exp Neurol. 2019 Feb;312:20-32. // Cell Commun Signal. 2016 Dec 15;14(1):32. // PLoS One. 2015 Apr 7;10(4):e0123642. // Nat Genet. 2023 Feb;55(2):232-245.

For additional information on this antibody [view antibody link](#).

This antibody is certified for Simple Western™ technology. To learn about Simple Western technology, available antibodies, or to submit new antibodies, visit the links below. For additional information, please contact:

[support@proteinsimple.com](mailto:support@proteinsimple.com)

[Simple Western Systems](#)

[Simple Western Antibody Database](#)

[Submit Antibody Validation Data](#)