

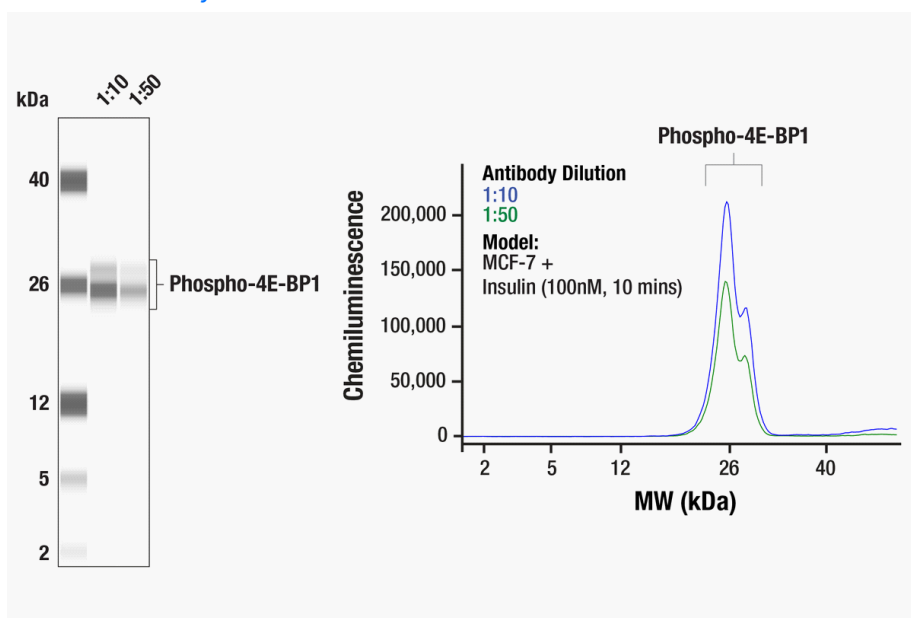
Simple Western Certified Antibody Datasheet

Phospho-4E-BP1

Vendor: Cell Signaling Technology

Catalog #: 13443

[View Antibody Link](#)



Simple Western™ analysis of MCF-7 lysates (1 mg/mL) treated with insulin (100 nM, 10 mins) using Phospho-4E-BP1 (Ser65) (D9G1Q) Rabbit mAb #13443. The virtual lane view (left) shows the target band (as indicated) at 1:10 and 1:50 dilutions of primary antibody. The corresponding electropherogram view (right) plots chemiluminescence by molecular weight along the capillary at 1:10 (blue line) and 1:50 (green line) dilutions of primary antibody. This experiment was performed under reducing conditions on the Jess™ Simple Western instrument from R&D Systems, a Bio-Techne brand, using the 2–40 kDa Separation Module. Certified by Cell Signaling Technology

Antibody

Name:	Phospho-4E-BP1 (Ser65) (D9G1Q) Rabbit mAb
Host:	Rabbit
Clonality:	Monoclonal
Type:	Primary
Dilution:	1:10–1:50 (recommended by CST)
Sample Concentration:	1 mg/mL (recommended by CST)

Assay

Type:	Size
Matrix:	2–40 kDa
Observed kDa:	12
Sample Type:	MCF-7 + Insulin (100 nM, 10 min)

Publications (0)

For additional information on this antibody: [view antibody link](#).

This antibody is certified for Simple Western™ technology. Visit the links below to learn about Simple Western technology, find validated antibodies, or submit new antibody validation data. For more information, contact: instrument.support@bio-techne.com

[Simple Western Systems](#)

[Simple Western Antibody Database](#)

[Submit Antibody Validation Data](#)

R&D systems by **biotechne**

For Research Use or Manufacturing Purposes Only.

R&D Systems™ and Bio-Techne® are trademarks or registered trademarks of Bio-Techne Corporation and affiliated entities. All other trademarks, service marks, and trade names are the property of their respective owners. Any use of third-party names, logos, or marks does not imply affiliation, sponsorship, or endorsement. © 2026 Bio-Techne.